

LEA Name : South Middleton SD
Address : Administration Office, Suite 100
Boiling Springs , PA 17007

County : Cumberland
AUN Number : 115218303
LEA Type : SD

Annual Financial Report Accuracy Certification Statement

For Fiscal Year Ending

6/30/2021

Pennsylvania Department of Education


&

Office of Comptroller Operations

PDE-2056: Intermediate Unit

PDE-2057: School District, AVTS/CTC, Charter School,
and Special Program Jointure

CERTIFICATION: By signing this page I agree that the electronic data submitted is a complete and accurate statement of the financial operations and status of the local education agency for the fiscal year. It has been prepared in accordance with generally accepted accounting principles and established Commonwealth of PA reporting guidelines.



Chief School Administrator Signature

Date

12/22/21



Board Secretary Signature

Date

12/20/2021

Tina Darchicourt

Contact Person

tdarchicourt@smsd.us

Contact Person E-mail Address

(717)258-6484

Ext :2306

Contact Person Telephone Number

Contact Person Fax Number

Audit Certification
Annual Financial Report:
For Fiscal Year Ending 6/30/2021
(Pursuant to PA School Code Section 218(b))

LEA Name : South Middleton SD
AUN Number : 115218303
County : Cumberland

Audit Certification Due: 12/31/2021

This certification is applicable to the Annual Financial Report data submitted through the Consolidated Financial Reporting System (CFRS).

CERTIFICATION: By signing this page I agree that the financial statements of the school have been properly audited as noted above pursuant to Article XXIV, and in the auditor's professional opinion, the Annual Financial Report (PDE-2057) submitted through CFRS is materially consistent with the audited financial statements.

Chief School Administrator

Signature

Date

Board Secretary

Signature

Date

Tina Darchicourt

Contact Person

tdarchicourt@smsd.us

Contact Person E-mail Address

(717)258-6484

Ext :2306

Contact Person Telephone Number

Contact Person Fax Number

South Middleton School District

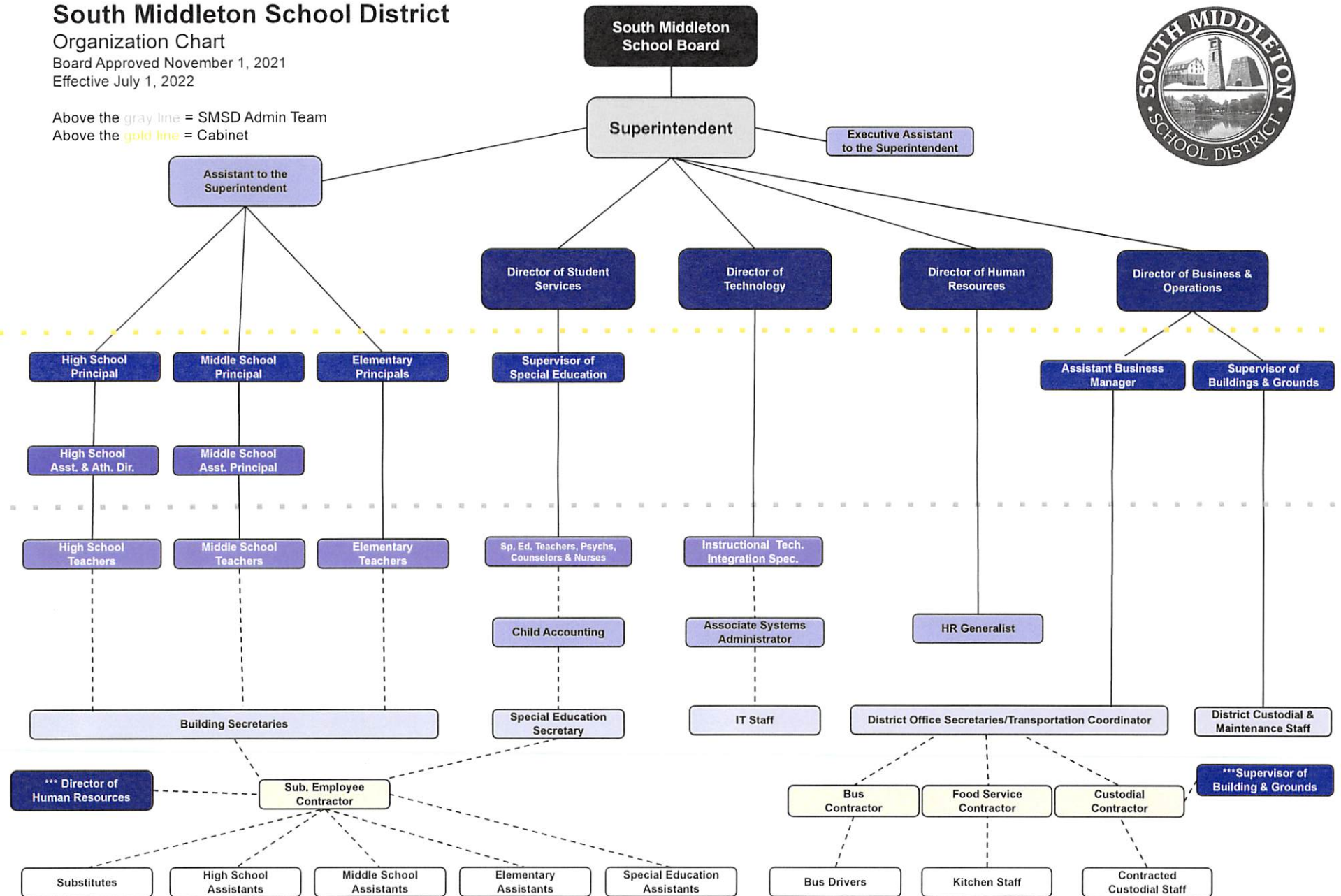
Organization Chart

Board Approved November 1, 2021

Effective July 1, 2022

Above the gray line = SMSD Admin Team

Above the gold line = Cabinet



Book	Policy Manual
Section	600 Finances
Title	GASB Statement 34
Code	622
Status	Active
Adopted	July 14, 2003
Last Revised	March 20, 2006

Purpose

The Board recognizes the need to implement the required accounting and financial reporting standards stipulated by the Pennsylvania Department of Education.[\[1\]](#)

Authority

The primary objectives of implementing the GASB Statement 34 are to assure compliance with state requirements, and properly account for both the financial and economic resources of the district.

Delegation of Responsibility

The responsibility to coordinate the compilation and preparation of all information necessary to implement this policy is delegated to the Business Administrator.

The designated individual shall be responsible for implementing of the necessary procedures to establish and maintain a fixed asset inventory, including depreciation schedules. Depreciation shall be computed on a straight-line basis over the useful lives of the assets, using an averaging convention. Normal maintenance and repairs shall be charged to expense as incurred; major renewals and betterments that materially extend the life or increase the value of the asset shall be capitalized. A schedule of accumulated depreciation shall be consistent from year to year. The basis for depreciation, including groups of assets and useful lives, shall be in writing and submitted for review to the Board and independent auditors.

The Business Administrator shall prepare the required Management Discussion and Analysis (MD&A). The MD&A shall be in the form required by GASB Statement 34 and shall be submitted to the Board for approval, prior to publication.

Prior to submission of the MD&A for Board approval, the district's independent auditors shall review the MD&A, in accordance with SAS No. 52, "Required Supplementary Information."

Guidelines

In order to associate debt with acquired assets and to avoid net asset deficits, any asset that has been acquired with debt proceeds shall be capitalized, regardless of the cost of the asset. The asset life of these assets shall be considered relative to the time of the respective debt amortizations.

For all other assets not acquired by debt proceeds, the dollar value of any single item for inclusion in the fixed assets accounts shall be not less than \$5,000.

Assets that fall below the capitalization threshold for GASB 34 reporting purposes may still be significant for insurance, warranty service, and obsolescence/ replacement policy tracking purposes. The district may record and maintain these non-GASB 34 asset inventories in subsidiary ledgers.

Legal

1. 24 P.S. 613

<u>Val Number</u>	<u>Description</u>	<u>Justification</u>
11001	NAG - Fund 21: Total Fund Balance must equal REG - Fund 21: Fund Balance - End of Year Fund Bal (NAG), Fund 21: \$193,938.00 Fund Bal (REG), Fund 21: \$-12,095.00	Due to the District's implementation of GASB 84 Fiduciary Activities, a prior period adjustment of \$206,033 was made to the Student Sponsored Activity Fund in order to properly present fund balance as of July 1, 2020.
11070	NAG: Total Fund Balance must equal REG: Fund Balance - End of Year Fund Bal (NAG), Total: \$8,188,720.00 Fund Bal (REG), Total: \$7,982,687.00	Due to the District's implementation of GASB 84 Fiduciary Activities, a prior period adjustment of \$206,033 was made to the Student Sponsored Activity Fund in order to properly present fund balance as of July 1, 2020.
50160	SOIN: All Governmental Fund General Obligation Bonds must include an amount for Interest Paid during Fiscal Year. Correct data or enter a justification.	General Obligation Bonds, Series of 2021 was issue in June of 2021 and therefore there is no interest payment to report as of June 30, 2021.
50180	SOIN: All Governmental Fund General Obligation Bonds must include an amount for Amount Due Within One Year (Principal and Interest). Correct data or enter a justification.	General Obligation Bonds, Series' of 2014 and 2015 each have a scheduled balloon payment during the 2022-2023 fiscal year. Therefore, there is no current portion due to report for either of these bonds.
50281	SOIN: Current Year AFR amount must equal Prior Year AFR amount. SOIN, Beg Bal, Other Long Term Debt: \$778,233.00 PY Ending Bal, Other Long Term Debt: \$496,559.00	The 2019-2020 AFR should have reported July 1, 2019 beginning balance as \$645,836, additions as \$291,371, and reductions as \$158,974. Therefore, the prior year ending balance should have been \$778,233 for Other Long Term Debt.
50450	SESS - 2350 Legal and Accounting Services: SESS Schedule amounts for Special Education vary from prior year by 40% or more. Correct the data or enter a justification. SESS Schedule 2350: \$23,880.55 Prior Year SESS Schedule 2350: \$14,456.00	South Middleton School District experienced an increased need for legal services related to right to know requests and personnel topics during the 2020-2021 fiscal year.

LEA : 115218303 South Middleton SD

Printed 12/20/2021 4:35:49 PM

Amounts Expressed in Whole Dollars		<u>General Fund</u> <u>(10)</u>	<u>Student Sponsored</u> <u>Activity Fund</u> <u>(21)</u>	<u>Public Purpose Trust</u> <u>(27)</u>	<u>Other Compt Approved</u> <u>(28)</u>	<u>Athletic / Activity</u> <u>(29)</u>
Assets And Deferred Outflows Of Resources						
Assets						
0100	Cash and Cash Equivalents	5,237,749	201,424			
0110	Investments	3,428,050				
0120	Taxes Receivable	1,133,154				
0130	Due From Other Funds	13,969				
0141	Due From Other Governments	1,508,878				
0142	State Revenue Receivable					
0143	Federal Revenue Receivable					
0145	Other Intergovernmental Revenue Receivable					
0146	Due from Primary Government					
0147	Due from Component Unit					
0150	Other Receivables	222,833	1,180			
0170	Inventories					
0180	Prepaid Expenses (Expenditures)					
0190	Other Current Assets					
Total Assets		\$11,544,633	\$202,604			
0910	Deferred Outflows of Resources					
Total Assets And Deferred Outflows Of Resources		\$11,544,633	\$202,604			

LEA : 115218303 South Middleton SD

Printed 12/20/2021 4:35:49 PM

Amounts Expressed in Whole Dollars		<u>Capital Reserve (690.</u> <u>1850)</u> <u>(31)</u>	<u>Capital Reserve (1431)</u> <u>(32)</u>	<u>Other Capital Projects</u> <u>Fund</u> <u>(39)</u>	<u>Debt Service</u> <u>(40)</u>	<u>Permanent</u> <u>(90)</u>
Assets And Deferred Outflows Of Resources						
Assets						
0100	Cash and Cash Equivalents		11,093	249,086		
0110	Investments			741,351		
0120	Taxes Receivable					
0130	Due From Other Funds		50,872			
0141	Due From Other Governments					
0142	State Revenue Receivable					
0143	Federal Revenue Receivable					
0145	Other Intergovernmental Revenue Receivable					
0146	Due from Primary Government					
0147	Due from Component Unit					
0150	Other Receivables					
0170	Inventories					
0180	Prepaid Expenses (Expenditures)					
0190	Other Current Assets					
Total Assets			\$61,965	\$990,437		
0910	Deferred Outflows of Resources					
Total Assets And Deferred Outflows Of Resources			\$61,965	\$990,437		

LEA : 115218303 South Middleton SD

Printed 12/20/2021 4:35:49 PM

Amounts Expressed in Whole Dollars		<u>Total Governmental</u> <u>Funds</u>
Assets And Deferred Outflows Of Resources		
Assets		
0100 Cash and Cash Equivalents		5,699,352
0110 Investments		4,169,401
0120 Taxes Receivable		1,133,154
0130 Due From Other Funds		64,841
0141 Due From Other Governments		1,508,878
0142 State Revenue Receivable		
0143 Federal Revenue Receivable		
0145 Other Intergovernmental Revenue Receivable		
0146 Due from Primary Government		
0147 Due from Component Unit		
0150 Other Receivables		224,013
0170 Inventories		
0180 Prepaid Expenses (Expenditures)		
0190 Other Current Assets		
Total Assets		\$12,799,639
0910 Deferred Outflows of Resources		
Total Assets And Deferred Outflows Of Resources		\$12,799,639

LEA : 115218303 South Middleton SD

Printed 12/20/2021 4:35:49 PM

Amounts Expressed in Whole Dollars	<u>General Fund</u> <u>(10)</u>	<u>Student Sponsored</u> <u>Activity Fund</u> <u>(21)</u>	<u>Public Purpose Trust</u> <u>(27)</u>	<u>Other Compt Approved</u> <u>(28)</u>	<u>Athletic / Activity</u> <u>(29)</u>
Liabilities And Deferred Inflows Of Resources And Fund Balances					
Liabilities					
0400 Due to Other Funds		8,460			
0411 Due to Other Governments	579,762				
0412 Due to Primary Government					
0413 Due to Component Unit					
0420 Accounts Payable	529,600	206			
0430 Contracts Payable					
0440 Current Portion of Long-Term Debt					
0450 Short-Term Payables					
0461 Accrued Salaries and Benefits	830,583				
0462 Payroll Deductions and Withholding	2,317,708				
0480 Unearned Revenues					
0490 Other Current Liabilities					
Total Liabilities	\$4,257,653	\$8,666			
0950 Deferred Inflows of Resources	293,692				
Fund Balances					
0810 Nonspendable Fund Balance					
0820 Restricted Fund Balance		193,938			
0830 Committed Fund Balance	5,750,000				
0840 Assigned Fund Balance					
0850 Unassigned Fund Balance	1,243,288				
Total Fund Balances	\$6,993,288	\$193,938			
Total Liabilities, Deferred Inflows Of Resources And Fund Balances	\$11,544,633	\$202,604			

LEA : 115218303 South Middleton SD

Printed 12/20/2021 4:35:49 PM

Amounts Expressed in Whole Dollars		<u>Capital Reserve (690.</u> <u>1850)</u> <u>(31)</u>	<u>Capital Reserve (1431)</u> <u>(32)</u>	<u>Other Capital Projects</u> <u>Fund</u> <u>(39)</u>	<u>Debt Service</u> <u>(40)</u>	<u>Permanent</u> <u>(90)</u>
Liabilities And Deferred Inflows Of Resources And Fund Balances						
Liabilities						
0400	Due to Other Funds			50,908		
0411	Due to Other Governments					
0412	Due to Primary Government					
0413	Due to Component Unit					
0420	Accounts Payable					
0430	Contracts Payable					
0440	Current Portion of Long-Term Debt					
0450	Short-Term Payables					
0461	Accrued Salaries and Benefits					
0462	Payroll Deductions and Withholding					
0480	Unearned Revenues					
0490	Other Current Liabilities					
Total Liabilities				\$50,908		
0950	Deferred Inflows of Resources					
Fund Balances						
0810	Nonspendable Fund Balance					
0820	Restricted Fund Balance		61,965	939,529		
0830	Committed Fund Balance					
0840	Assigned Fund Balance					
0850	Unassigned Fund Balance					
Total Fund Balances			\$61,965	\$939,529		
Total Liabilities, Deferred Inflows Of Resources And Fund Balances			\$61,965	\$990,437		

LEA : 115218303 South Middleton SD

Printed 12/20/2021 4:35:49 PM

Amounts Expressed in Whole Dollars		<u>Total Governmental</u> <u>Funds</u>
Liabilities And Deferred Inflows Of Resources And Fund Balances		
Liabilities		
0400 Due to Other Funds		59,368
0411 Due to Other Governments		579,762
0412 Due to Primary Government		
0413 Due to Component Unit		
0420 Accounts Payable		529,806
0430 Contracts Payable		
0440 Current Portion of Long-Term Debt		
0450 Short-Term Payables		
0461 Accrued Salaries and Benefits		830,583
0462 Payroll Deductions and Withholding		2,317,708
0480 Unearned Revenues		
0490 Other Current Liabilities		
Total Liabilities		\$4,317,227
0950 Deferred Inflows of Resources		293,692
Fund Balances		
0810 Nonspendable Fund Balance		
0820 Restricted Fund Balance		1,195,432
0830 Committed Fund Balance		5,750,000
0840 Assigned Fund Balance		
0850 Unassigned Fund Balance		1,243,288
Total Fund Balances		\$8,188,720
Total Liabilities, Deferred Inflows Of Resources And Fund Balances		\$12,799,639

Amounts Expressed in Whole Dollars	<u>General Fund</u> <u>(10)</u>	<u>Student Sponsored</u> <u>Activity Fund</u> <u>(21)</u>	<u>Public Purpose Trust</u> <u>(27)</u>	<u>Other Compt Approved</u> <u>(28)</u>	<u>Athletic / Activity</u> <u>(29)</u>
Revenues					
6000 Revenue from Local Sources	27,568,959	96,793			
7000 Revenue from State Sources	10,929,243				
8000 Revenue from Federal Sources	797,081				
Total Revenues	\$39,295,283	\$96,793			
Expenditures					
1000 Instruction	24,338,306				
2000 Support Services	12,209,165				
3000 Operation of Non-Instructional Services	750,006	108,888			
4000 Facilities Acquisition, Construction and Improvement Services					
5110 Debt Service	3,302,362				
5130 Refund of Prior Year Revenues / Receipts					
Total Expenditures	\$40,599,839	\$108,888			
Excess (Deficiency) Of Revenues Over Expenditures	(\$1,304,556)	(\$12,095)			
Other Financing Sources (Uses)					
9110 Face Value of Bonds Issued					
9120 Proceeds from Refunding of Bonds					
9130 Bond Premiums					
9200 Proceeds from Extended-Term Financing					
9300 Interfund Transfers - IN					
9400 Sale of or Compensation for Loss of Fixed Assets					
9710 Transfers from Component Units					
9720 Transfers from Primary Governments					
9910 Other Financing Sources Not Listed in the 9000 Series					
9990 Insurance Recoveries					
5120 Debt Service – Refunded Bonds					
5150 Bond Discounts					
5200 Interfund Transfers – Out	250,000				
5300 Transfers Out to Component Units/Primary Governments					
Total Other Financing Sources (Uses)	(\$250,000)				

LEA : 115218303 South Middleton SD

Printed 12/20/2021 4:35:55 PM

Amounts Expressed in Whole Dollars	<u>Capital Reserve (690.1850)</u> <u>(31)</u>	<u>Capital Reserve (1431)</u> <u>(32)</u>	<u>Other Capital Projects</u> <u>Fund</u> <u>(39)</u>	<u>Debt Service</u> <u>(40)</u>	<u>Permanent</u> <u>(90)</u>
Revenues					
6000 Revenue from Local Sources		13	487		
7000 Revenue from State Sources					
8000 Revenue from Federal Sources					
Total Revenues		\$13	\$487		
Expenditures					
1000 Instruction					
2000 Support Services			167,430		
3000 Operation of Non-Instructional Services					
4000 Facilities Acquisition, Construction and Improvement Services			1,238,777		
5110 Debt Service			160,288		
5130 Refund of Prior Year Revenues / Receipts					
Total Expenditures			\$1,566,495		
Excess (Deficiency) Of Revenues Over Expenditures		\$13	(\$1,566,008)		
Other Financing Sources (Uses)					
9110 Face Value of Bonds Issued					
9120 Proceeds from Refunding of Bonds			9,265,000		
9130 Bond Premiums			734,110		
9200 Proceeds from Extended-Term Financing					
9300 Interfund Transfers - IN			250,000		
9400 Sale of or Compensation for Loss of Fixed Assets					
9710 Transfers from Component Units					
9720 Transfers from Primary Governments					
9910 Other Financing Sources Not Listed in the 9000 Series					
9990 Insurance Recoveries					
5120 Debt Service – Refunded Bonds			8,930,000		
5150 Bond Discounts					
5200 Interfund Transfers – Out					
5300 Transfers Out to Component Units/Primary Governments					
Total Other Financing Sources (Uses)			\$1,319,110		

Amounts Expressed in Whole Dollars		<u>Total Governmental Funds</u>
Revenues		
6000	Revenue from Local Sources	27,666,252
7000	Revenue from State Sources	10,929,243
8000	Revenue from Federal Sources	797,081
Total Revenues		\$39,392,576
Expenditures		
1000	Instruction	24,338,306
2000	Support Services	12,376,595
3000	Operation of Non-Instructional Services	858,894
4000	Facilities Acquisition, Construction and Improvement Services	1,238,777
5110	Debt Service	3,462,650
5130	Refund of Prior Year Revenues / Receipts	
Total Expenditures		\$42,275,222
Excess (Deficiency) Of Revenues Over Expenditures		(\$2,882,646)
Other Financing Sources (Uses)		
9110	Face Value of Bonds Issued	
9120	Proceeds from Refunding of Bonds	9,265,000
9130	Bond Premiums	734,110
9200	Proceeds from Extended-Term Financing	
9300	Interfund Transfers - IN	250,000
9400	Sale of or Compensation for Loss of Fixed Assets	
9710	Transfers from Component Units	
9720	Transfers from Primary Governments	
9910	Other Financing Sources Not Listed in the 9000 Series	
9990	Insurance Recoveries	
5120	Debt Service – Refunded Bonds	8,930,000
5150	Bond Discounts	
5200	Interfund Transfers – Out	250,000
5300	Transfers Out to Component Units/Primary Governments	
Total Other Financing Sources (Uses)		\$1,069,110

Amounts Expressed in Whole Dollars		<u>General Fund</u> <u>(10)</u>	<u>Student Sponsored</u> <u>Activity Fund</u> <u>(21)</u>	<u>Public Purpose Trust</u> <u>(27)</u>	<u>Other Compt Approved</u> <u>(28)</u>	<u>Athletic / Activity</u> <u>(29)</u>
Special And Extraordinary Items						
9920 Special Items – Gains						
9930 Extraordinary Items – Gains						
5520 Special Items – Losses						
5530 Extraordinary Items – Losses						
Net Change In Fund Balances		(\$1,554,556)	(\$12,095)			
Fund Balance						
0001 Fund Balance - Beginning of Fiscal Year		8,547,843				
Fund Balance - End Of Year		\$6,993,287	(\$12,095)			

Amounts Expressed in Whole Dollars		<u>Capital Reserve (690.</u> <u>1850)</u> <u>(31)</u>	<u>Capital Reserve (1431)</u> <u>(32)</u>	<u>Other Capital Projects</u> <u>Fund</u> <u>(39)</u>	<u>Debt Service</u> <u>(40)</u>	<u>Permanent</u> <u>(90)</u>
Special And Extraordinary Items						
9920	Special Items – Gains					
9930	Extraordinary Items – Gains					
5520	Special Items – Losses					
5530	Extraordinary Items – Losses					
Net Change In Fund Balances			\$13	(\$246,898)		
Fund Balance						
0001	Fund Balance - Beginning of Fiscal Year		61,952	1,186,428		
Fund Balance - End Of Year			\$61,965	\$939,530		

Amounts Expressed in Whole Dollars		<u>Total Governmental</u> <u>Funds</u>
Special And Extraordinary Items		
9920	Special Items – Gains	
9930	Extraordinary Items – Gains	
5520	Special Items – Losses	
5530	Extraordinary Items – Losses	
Net Change In Fund Balances		(\$1,813,536)
Fund Balance		
0001	Fund Balance - Beginning of Fiscal Year	9,796,223
Fund Balance - End Of Year		\$7,982,687

LEA : 115218303 South Middleton SD

Printed 12/20/2021 4:35:58 PM

Amounts Expressed in Whole Dollars	<u>Food Service</u> <u>(51)</u>	<u>Child Care</u> <u>Operations</u> <u>(52)</u>	<u>Other Enterprise</u> <u>(58)</u>	<u>TOTAL</u>	<u>Internal Service</u> <u>(60)</u>
Assets And Deferred Outflows Of Resources					
Current Assets					
0100 Cash and Cash Equivalents	7,584			7,584	
0110 Investments					
0130 Due From Other Funds					
0141 Due From Other Governments					
0142 State Revenue Receivable	2,053			2,053	
0143 Federal Revenue Receivable	49,457			49,457	
0146 Due from Primary Government					
0147 Due from Component Unit					
0150 Other Receivables					
0170 Inventories	28,024			28,024	
0180 Prepaid Expenses (Expenditures)					
0190 Other Current Assets					
Total Current Assets	\$87,118			\$87,118	
Noncurrent Assets					
0211 Land					
0212 Site Improvements (Net)					
0220 Buildings and Building Improvements (Net)					
0230 Machinery, Equipment and Furniture (Net)					
0250 Construction in Progress					
0260 Long Term Prepayments					
0290 Other Noncurrent Assets					
Total Noncurrent Assets					
0910 Deferred Outflows of Resources					
Total Assets And Deferred Outflows Of Resources	\$87,118			\$87,118	

LEA : 115218303 South Middleton SD

Printed 12/20/2021 4:35:58 PM

Amounts Expressed in Whole Dollars	<u>Food Service</u> <u>(51)</u>	<u>Child Care</u> <u>Operations</u> <u>(52)</u>	<u>Other Enterprise</u> <u>(58)</u>	<u>TOTAL</u>	<u>Internal Service</u> <u>(60)</u>
Liabilities And Deferred Inflows Of Resources And Net Position					
Current Liabilities					
0400 Due to Other Funds	5,473			5,473	
0411 Due to Other Governments					
0413 Due to Component Unit					
0420 Accounts Payable	47,405			47,405	
0430 Contracts Payable					
0440 Current Portion of Long-Term Debt					
0450 Short-Term Payables					
0461 Accrued Salaries and Benefits					
0462 Payroll Deductions and Withholding					
0480 Unearned Revenues	41,045			41,045	
0490 Other Current Liabilities					
Total Current Liabilities	\$93,923			\$93,923	
Noncurrent Liabilities					
0510 Bonds Payable					
0520 Extended-Term Financing Agreements Payable					
0530 Lease-Purchase Obligations					
0540 Accumulated Compensated Absences					
0550 Authority Lease Obligations					
0560 Other Post-Employment Benefits (OPEB)					
0570 Net Pension Liability					
0599 Other Noncurrent Liabilities					
Total Noncurrent Liabilities					
Total Liabilities	\$93,923			\$93,923	
0950 Deferred Inflows of Resources					
Net Position					
0791 Net Investment in Capital Assets					
0008 Restricted Net Position (0792 – 0798)					
0799 Unrestricted Net Position	(6,805)			(6,805)	
Total Net Position	(\$6,805)			(\$6,805)	
Total Liabilities And Deferred Inflows Of Resources And Net Position	\$87,118			\$87,118	

Amounts Expressed in Whole Dollars	<u>Food Service</u> <u>(51)</u>	<u>Child Care Operations</u> <u>(52)</u>	<u>Other Enterprise</u> <u>(58)</u>	<u>TOTAL</u>	<u>Internal Service</u> <u>(60)</u>
Operating Revenues					
6600 Food Service Revenue	23,368			23,368	
0071 Charges for Services					
0072 Other Operating Revenue	13,071			13,071	
Total Operating Revenues	\$36,439			\$36,439	
Operating Expenses					
100 Personnel Services – Salaries					
200 Personnel Services – Employee Benefits					
300 Purchased Professional and Technical Services					
400 Purchased Property Services					
500 Other Purchased Services	795,450			795,450	
600 Supplies	58,275			58,275	
740 Depreciation	640			640	
810 Dues and Fees					
880 Refunds of Prior Years' Receipts					
890 Miscellaneous Expenditures					
Total Operating Expenses	\$854,365			\$854,365	
Operating Income (Loss)	(\$817,926)			(\$817,926)	
Non Operating Revenues (Expenses)					
6500 Earnings on Investments	128			128	
6920 Contributions and Donations from Private Sources					
6930 Gains or Losses on Sale of Fixed Assets					
6991 Refunds of a Prior Year Expenditure					
7000 Revenue from State Sources	30,530			30,530	
8000 Revenue from Federal Sources	805,035			805,035	
9990 Insurance Recoveries					
820 Claims and Judgments Against the LEA					
830 Interest					
TOTAL Non Operating Revenues (Expenses)	\$835,693			\$835,693	
Income (Loss) Before Contributions And Transfers	\$17,767			\$17,767	

Amounts Expressed in Whole Dollars	<u>Food Service</u> <u>(51)</u>	<u>Child Care Operations</u> <u>(52)</u>	<u>Other Enterprise</u> <u>(58)</u>	<u>TOTAL</u>	<u>Internal Service</u> <u>(60)</u>
Contributions, Transfers, and Special and Extraordinary Items					
5200 Interfund Transfers – Out					
5300 Transfers Out to Component Units/Primary Governments					
5520 Special Items – Losses					
5530 Extraordinary Items – Losses					
9300 Interfund Transfers - IN					
9500 Capital Contributions					
9700 Transfers IN From Component Units/Primary Governments					
9920 Special Items – Gains					
9930 Extraordinary Items – Gains					
Change In Net Position	\$17,767			\$17,767	
0002 Net Position - Beginning of Fiscal Year	(24,572)			(24,572)	
0003 Accounting Changes / Residual Equity Transfers					
Net Position - End Of Year	(\$6,805)			(\$6,805)	

LEA : 115218303 South Middleton SD

Printed 12/20/2021 4:36:10 PM

Amounts Expressed in Whole Dollars	<u>Food Service</u> <u>(51)</u>	<u>Child Care Operations</u> <u>(52)</u>	<u>Other Enterprise</u> <u>(58)</u>	<u>TOTAL</u>	<u>Internal Service(60)</u>
Cash Flows From Operating Activities					
0011 Cash Receipts From Users	38,885			38,885	
0012 Cash Receipts From Assessments Made to Other Funds					
0013 Cash Receipts From Earnings on Investments					
0014 Cash Receipts From Other Operating Revenue					
0015 Cash Payments To Employees For Services					
0016 Cash Payments For Insurance Claims					
0017 Cash Payments To Suppliers For Goods and Services	966,301			966,301	
0018 Cash Payments For Other Operating Expenses					
Net Cash Provided By (Used For) Operating Activities	(\$927,416)			(\$927,416)	
Cash Flows From Non-Capital Financing Activities					
0021 Receipts From Local Sources - 6000					
0022 Receipts From State Sources - 7000	31,821			31,821	
0023 Receipts From Federal Sources -8000	779,268			779,268	
0024 Notes and Loans Received (Repaid)					
0025 Interest Paid on Notes/Loans - 5100-830					
0026 Operating Transfers In (Out)/Residual Equity Trans					
0027 Operating Transfers In (Out) Primary Government / Comp Unit					
0028 Receipts From Refund of Prior Year Expenditures - 6991					
0029 Special and Extraordinary Gains (losses)					
0030 Receipts from Insurance Recoveries -9990					
Net Cash Prov By (Used for) Non-Capital Financing Activities	\$811,089			\$811,089	
Cash Flows From Capital and Related Financing Activities					
0031 Payments For Fac Acq, Const, and Imp - 4000					
0032 Gain / (Loss) on Sale of Fixed Assets - 6930					
0033 Proceeds From Extended Term Financing - 9200					
0034 Principal Paid on Financing Agreements					
0035 Interest Paid on Financing Agreements - 5100-830					
0036 (Inc) Dec in Contributed Capital					
Net Cash Prov By (Used for) Capital and Related Financing Activities					
Cash Flows From Investing Activities					
0041 Earnings on Investments - 6500	128			128	
0042 Purchase of Inv Securities / Deposits to Inv Pools					
0043 Receipts From Investment Pool Withdrawals					
0044 Proceeds from Sale and Maturity of Inv Securities					

LEA : 115218303 South Middleton SD

Printed 12/20/2021 4:36:10 PM

0045 Loans Received (Paid)

Net Cash Prov By (Used for) Investing Activities	\$128	\$128
--	-------	-------

LEA : 115218303 South Middleton SD

Printed 12/20/2021 4:36:10 PM

	<u>Food Service</u> <u>(51)</u>	<u>Child Care Operations</u> <u>(52)</u>	<u>Other Enterprise</u> <u>(58)</u>	<u>TOTAL</u>	<u>Internal Service</u> <u>(60)</u>
Net Increase (Decrease) in Cash Flows	(116,199)			(116,199)	
0004 Cash and Cash Equivalents Beginning of Year	123,783			123,783	
Cash and Cash Equivalents at Year End	\$7,584			\$7,584	
Reconciliation of Operating Income (Loss) To Net Cash Provided by (Used For) Operating Activities					
0005 Operating Income (Loss) per REP	(817,926)			(817,926)	
Adjustments					
0051 Depreciation and Net Amortization	640			640	
0052 Provision for Uncollectible Accounts					
0053 Other Adjustments	58,275			58,275	
Effect of Changes in Assets, Liabilities, Deferred Outflows and Deferred Inflows					
0054 (Inc) Dec In Accounts Receivable (0120-0150)					
0055 Advances to Other Funds (0160)					
0056 (Inc) Dec in Inventories (0170)	(9,408)			(9,408)	
0057 (Inc) Dec in Prepaid Expenses (0180)					
0058 (Inc) Dec in Other Current or Noncurrent Assets	368			368	
0064 Deferred Outflows (0910)					
0059 Inc (Dec) in Accounts Payable (0400-0450)	(81,503)			(81,503)	
0060 Inc (Dec) in Accrued Salaries/Benefits (0461)					
0065 Inc (Dec) in Net Pension Liabilities (0570)					
0066 Inc (Dec) in Other Postemp Benefit Oblig (0560)					
0061 Inc (Dec) in Payroll Deductions/Withholding (0462)					
0062 Inc (Dec) in Unearned Revenue (0480)	2,446			2,446	
0063 Inc (Dec) in Other Current or Noncurrent Liabilities	(80,308)			(80,308)	
0067 Deferred Inflows (0950)					
Total Adjustments	(\$109,490)			(\$109,490)	
Cash Provided By (Used for) Total	(\$927,416)			(\$927,416)	

COMBINED STATEMENT OF CASH FLOWS
SCHEDULE OF NONCASH INVESTING, CAPITAL, AND FINANCING ACTIVITIES

Explanation of Transaction and Balance Sheet Effect	Amount
Total	

LEA : 115218303 South Middleton SD

Printed 12/20/2021 4:36:13 PM

Amounts Expressed in Whole Dollars		<u>Private Purpose Trust</u> <u>(71)</u>	<u>Investment Trust</u> <u>(72)</u>	<u>Pension Trust</u> <u>(73)</u>	<u>Student Activity Custodial</u> <u>(81)</u>
Assets And Deferred Outflows Of Resources					
Assets					
0100	Cash and Cash Equivalents	202,130			
0110	Investments				
0130	Due From Other Funds				
0140	Due from Other Governments, Primary Government and Component Units				
0150	Other Receivables				
0170	Inventories				
0180	Prepaid Expenses (Expenditures)				
0190	Other Current Assets				
0220	Buildings and Building Improvements (Net)				
0230	Machinery, Equipment and Furniture (Net)				
Total Assets		\$202,130			
0910	Deferred Outflows of Resources				
Total Assets And Deferred Outflows Of Resources		\$202,130			

LEA : 115218303 South Middleton SD

Printed 12/20/2021 4:36:13 PM

Amounts Expressed in Whole Dollars		<u>Other Custodial</u> <u>(89)</u>	<u>Fiduciary Component Units</u> <u>(98)</u>	<u>Total Fiduciary Funds</u>
Assets And Deferred Outflows Of Resources				
Assets				
0100	Cash and Cash Equivalents			202,130
0110	Investments			
0130	Due From Other Funds			
0140	Due from Other Governments, Primary Government and Component Units			
0150	Other Receivables			
0170	Inventories			
0180	Prepaid Expenses (Expenditures)			
0190	Other Current Assets			
0220	Buildings and Building Improvements (Net)			
0230	Machinery, Equipment and Furniture (Net)			
Total Assets				\$202,130
0910	Deferred Outflows of Resources			
Total Assets And Deferred Outflows Of Resources				\$202,130

LEA : 115218303 South Middleton SD

Printed 12/20/2021 4:36:13 PM

Amounts Expressed in Whole Dollars		<u>Private Purpose Trust</u>	<u>Investment Trust</u>	<u>Pension Trust</u>	<u>Student Activity Custodial</u>
		<u>(71)</u>	<u>(72)</u>	<u>(73)</u>	<u>(81)</u>
Liabilities, Deferred Inflows Of Resources And Net Position					
Liabilities					
0400	Due to Other Funds				
0410	Due to Other Governments, Primary Government and Component Units				
0420	Accounts Payable				
0430	Contracts Payable				
0450	Short-Term Payables				
0460	Payroll Accruals and Withholdings				
0480	Unearned Revenues				
0490	Other Current Liabilities				
Total Liabilities					
0950	Deferred Inflows of Resources				
Net Position					
0791	Net Investment in Capital Assets				
0009	Restricted Net Position (0792 – 0798)		202,130		
0799	Unrestricted Net Position				
Total Net Position			\$202,130		
Total Liabilities, Deferred Inflows Of Resources And Net Position			\$202,130		

LEA : 115218303 South Middleton SD

Printed 12/20/2021 4:36:13 PM

Amounts Expressed in Whole Dollars		<u>Other Custodial</u>	<u>Fiduciary Component Units</u>	<u>Total Fiduciary Funds</u>
		(89)	(98)	
Liabilities, Deferred Inflows Of Resources And Net Position				
Liabilities				
0400	Due to Other Funds			
0410	Due to Other Governments, Primary Government and Component Units			
0420	Accounts Payable			
0430	Contracts Payable			
0450	Short-Term Payables			
0460	Payroll Accruals and Withholdings			
0480	Unearned Revenues			
0490	Other Current Liabilities			
Total Liabilities				
0950	Deferred Inflows of Resources			
Net Position				
0791	Net Investment in Capital Assets			
0009	Restricted Net Position (0792 – 0798)			202,130
0799	Unrestricted Net Position			
Total Net Position				\$202,130
Total Liabilities, Deferred Inflows Of Resources And Net Position				\$202,130

LEA : 115218303 South Middleton SD

Printed 12/20/2021 4:36:16 PM

Amounts Expressed in Whole Dollars	<u>Private Purpose Trust</u> <u>(71)</u>	<u>Investment Trust</u> <u>(72)</u>	<u>Pension Trust</u> <u>(73)</u>	<u>Student Activity</u> <u>Custodial</u> <u>(81)</u>	<u>Other Custodial</u> <u>(89)</u>	<u>Fiduciary Component</u> <u>Units</u> <u>(98)</u>
Additions						
0091 Gifts and Contributions	20,107					
0095 Net Investment Earnings	231					
0092 Other Additions						
Deductions						
0093 Scholarships Awarded	10,215					
0094 Other Deductions						
Change In Net Position	\$10,123					
0006 Net Position – Beginning of Fiscal Year	192,007					
0007 Net Position Held in Trust for Pension Benefits						
Net Position - End of Fiscal Year	\$202,130					

LEA : 115218303 South Middleton SD

Printed 12/20/2021 4:36:16 PM

Amounts Expressed in Whole Dollars		<u>Total Fiduciary</u>
		<u>Funds</u>
Additions		
0091	Gifts and Contributions	20,107
0095	Net Investment Earnings	231
0092	Other Additions	
Deductions		
0093	Scholarships Awarded	10,215
0094	Other Deductions	
Change In Net Position		\$10,123
0006	Net Position – Beginning of Fiscal Year	192,007
0007	Net Position Held in Trust for Pension Benefits	
Net Position - End of Fiscal Year		\$202,130

	Revenue Reported In Current Year	Current Year Tax Accrual	Prior Year Tax Accrual	Taxes Collected In Current Year
Revenue from Local Sources				
6111 Current Real Estate Taxes	20,682,331.58			20,682,331.58
6112 Interim Real Estate Taxes	95,773.88			95,773.88
6113 Public Utility Realty Taxes	24,360.09			24,360.09
6114 Payments in Lieu of Current Taxes - State / Local	226,914.23			226,914.23
6143 Current Act 511 Local Services Taxes	41,935.34			41,935.34
6151 Current Act 511 Earned Income Taxes	4,928,106.16			4,928,106.16
6153 Current Act 511 Real Estate Transfer Taxes	619,694.49			619,694.49
6411 Delinquent Real Estate Taxes	320,356.90			320,356.90
6500 Earnings on Investments	51,700.89			
6700 Revenues from LEA Activities	358.91			
6832 Federal IDEA Revenue Received as Pass Through	351,394.39			
6910 Rentals	7,287.50			
6920 Contributions and Donations from Private Sources	12,500.00			
6941 Regular Day School Tuition	10,596.50			
6942 Summer School Tuition	19,203.00			
6944 Receipts from Other LEAs in Pennsylvania - Education	140,450.91			
6991 Refunds of a Prior Year Expenditure	8,479.60			
6999 Other Revenues Not Specified Above	27,514.83			
TOTAL Revenue from Local Sources	\$27,568,959.20			\$26,939,472.67

	Revenue Reported In Current Year			
<u>Revenue from State Sources</u>				
7111 Basic Education Funding-Formula	4,565,310.41			
7112 Basic Education Funding-Social Security	560,501.85			
7160 Tuition for Orphans Subsidy	75,901.74			
7220 Vocational Education	51,612.88			
7271 Special Education funds for School-Aged Pupils	1,043,659.52			
7311 Pupil Transportation Subsidy	579,658.92			
7312 Nonpublic and Charter School Pupil Transportation Subsidy	22,330.00			
7320 Rental and Sinking Fund Payments / Building Reimbursement Subsidy	743,386.92			
7330 Health Services (Medical, Dental, Nurse, Act 25)	47,122.38			
7340 State Property Tax Reduction Allocation	540,122.61			
7361 School Safety and Security Grants	30,464.15			
7505 Ready to Learn Block Grant	208,431.00			
7820 State Share of Retirement Contributions	2,460,740.16			
TOTAL Revenue from State Sources	\$10,929,242.54			

	Revenue Reported In Current Year			
<u>Revenue from Federal Sources</u>				
8514 NCLB, Title I - Improving the Academic Achievement of the Disadvantaged	208,657.00			
8515 NCLB, Title II - Preparing, Training and Recruiting High Quality Teachers and Principals	46,528.00			
8517 NCLB, Title IV - 21St Century Schools	15,975.00			
8741 Elementary and Secondary School Emergency Relief Fund (ESSER)	236,200.00			
8742 Governor's Emergency Education Relief Fund (GEER)	16,048.00			
8743 ESSER II - Elementary and Secondary School Emergency Relief Fund	70,875.11			
8749 Other CARES Act Funding	202,798.00			
TOTAL Revenue from Federal Sources	\$797,081.11			
TOTAL FROM ALL SOURCES	\$39,295,282.85			\$26,939,472.67

LEA : 115218303 South Middleton SD

Printed 12/20/2021 4:36:23 PM

	<u>General Fund (10)</u>	<u>Student Sponsored Activity Fund (21)</u>	<u>Public Purpose Trust (27)</u>	<u>Other Compt Approved (28)</u>	<u>Athletic / Activity (29)</u>	<u>Capital Reserve (690, 1850) (31)</u>
6000 Revenue from Local Sources						
6111 Current Real Estate Taxes	20,682,331.58					
6112 Interim Real Estate Taxes	95,773.88					
6113 Public Utility Realty Taxes	24,360.09					
6114 Payments in Lieu of Current Taxes - State / Local	226,914.23					
6143 Current Act 511 Local Services Taxes	41,935.34					
6151 Current Act 511 Earned Income Taxes	4,928,106.16					
6153 Current Act 511 Real Estate Transfer Taxes	619,694.49					
6411 Delinquent Real Estate Taxes	320,356.90					
6500 Earnings on Investments	51,700.89					
6700 Revenues from LEA Activities	358.91	96,793.06				
6832 Federal IDEA Revenue Received as Pass Through	351,394.39					
6910 Rentals	7,287.50					
6920 Contributions and Donations from Private Sources	12,500.00					
6941 Regular Day School Tuition	10,596.50					
6942 Summer School Tuition	19,203.00					
6944 Receipts from Other LEAs in Pennsylvania - Education	140,450.91					
6991 Refunds of a Prior Year Expenditure	8,479.60					
6999 Other Revenues Not Specified Above	27,514.83					
6000 Total Revenue from Local Sources	\$27,568,959.20	\$96,793.06				
7000 Revenue from State Sources						
7111 Basic Education Funding-Formula	4,565,310.41					
7112 Basic Education Funding-Social Security	560,501.85					
7160 Tuition for Orphans Subsidy	75,901.74					
7220 Vocational Education	51,612.88					
7271 Special Education funds for School-Aged Pupils	1,043,659.52					
7311 Pupil Transportation Subsidy	579,658.92					
7312 Nonpublic and Charter School Pupil Transportation Subsidy	22,330.00					
7320 Rental and Sinking Fund Payments / Building Reimbursement Subsidy	743,386.92					
7330 Health Services (Medical, Dental, Nurse, Act 25)	47,122.38					
7340 State Property Tax Reduction Allocation	540,122.61					
7361 School Safety and Security Grants	30,464.15					
7505 Ready to Learn Block Grant	208,431.00					
7820 State Share of Retirement Contributions	2,460,740.16					
7000 Total Revenue from State Sources	\$10,929,242.54					

LEA : 115218303 South Middleton SD

Printed 12/20/2021 4:36:23 PM

	<u>Capital Reserve</u> <u>(1431) (32)</u>	<u>Other Capital</u> <u>Projects Fund (39)</u>	<u>Debt Service (40)</u>	<u>Permanent (90)</u>	<u>Total</u>
6000 Revenue from Local Sources					
6111 Current Real Estate Taxes					20,682,331.58
6112 Interim Real Estate Taxes					95,773.88
6113 Public Utility Realty Taxes					24,360.09
6114 Payments in Lieu of Current Taxes - State / Local					226,914.23
6143 Current Act 511 Local Services Taxes					41,935.34
6151 Current Act 511 Earned Income Taxes					4,928,106.16
6153 Current Act 511 Real Estate Transfer Taxes					619,694.49
6411 Delinquent Real Estate Taxes					320,356.90
6500 Earnings on Investments	12.88	487.27			52,201.04
6700 Revenues from LEA Activities					97,151.97
6832 Federal IDEA Revenue Received as Pass Through					351,394.39
6910 Rentals					7,287.50
6920 Contributions and Donations from Private Sources					12,500.00
6941 Regular Day School Tuition					10,596.50
6942 Summer School Tuition					19,203.00
6944 Receipts from Other LEAs in Pennsylvania - Education					140,450.91
6991 Refunds of a Prior Year Expenditure					8,479.60
6999 Other Revenues Not Specified Above					27,514.83
6000 Total Revenue from Local Sources	\$12.88	\$487.27			\$27,666,252.41
7000 Revenue from State Sources					
7111 Basic Education Funding-Formula					4,565,310.41
7112 Basic Education Funding-Social Security					560,501.85
7160 Tuition for Orphans Subsidy					75,901.74
7220 Vocational Education					51,612.88
7271 Special Education funds for School-Aged Pupils					1,043,659.52
7311 Pupil Transportation Subsidy					579,658.92
7312 Nonpublic and Charter School Pupil Transportation Subsidy					22,330.00
7320 Rental and Sinking Fund Payments / Building Reimbursement Subsidy					743,386.92
7330 Health Services (Medical, Dental, Nurse, Act 25)					47,122.38
7340 State Property Tax Reduction Allocation					540,122.61
7361 School Safety and Security Grants					30,464.15
7505 Ready to Learn Block Grant					208,431.00
7820 State Share of Retirement Contributions					2,460,740.16
7000 Total Revenue from State Sources					\$10,929,242.54

LEA : 115218303 South Middleton SD

Printed 12/20/2021 4:36:23 PM

	<u>General Fund (10)</u>	<u>Student Sponsored Activity Fund (21)</u>	<u>Public Purpose Trust (27)</u>	<u>Other Compt Approved (28)</u>	<u>Athletic / Activity (29)</u>	<u>Capital Reserve (690, 1850) (31)</u>
8000 Revenue from Federal Sources						
8514 NCLB, Title I - Improving the Academic Achievement of the Disadvantaged	208,657.00					
8515 NCLB, Title II - Preparing, Training and Recruiting High Quality Teachers and Principals	46,528.00					
8517 NCLB, Title IV - 21st Century Schools	15,975.00					
8741 Elementary and Secondary School Emergency Relief Fund (ESSER)	236,200.00					
8742 Governor's Emergency Education Relief Fund (GEER)	16,048.00					
8743 ESSER II - Elementary and Secondary School Emergency Relief Fund	70,875.11					
8749 Other CARES Act Funding	202,798.00					
8000 Total Revenue from Federal Sources	\$797,081.11					
9000 Other Financing Sources						
9120 Proceeds from Refunding of Bonds						
9130 Bond Premiums						
9310 General Fund Transfers						
9000 Total Other Financing Sources						
Total From All Sources	\$39,295,282.85	\$96,793.06				

LEA : 115218303 South Middleton SD

Printed 12/20/2021 4:36:23 PM

	<u>Capital Reserve</u> <u>(1431) (32)</u>	<u>Other Capital</u> <u>Projects Fund (39)</u>	<u>Debt Service (40)</u>	<u>Permanent (90)</u>	<u>Total</u>
8000 Revenue from Federal Sources					
8514 NCLB, Title I - Improving the Academic Achievement of the Disadvantaged					208,657.00
8515 NCLB, Title II - Preparing, Training and Recruiting High Quality Teachers and Principals					46,528.00
8517 NCLB, Title IV - 21st Century Schools					15,975.00
8741 Elementary and Secondary School Emergency Relief Fund (ESSER)					236,200.00
8742 Governor's Emergency Education Relief Fund (GEER)					16,048.00
8743 ESSER II - Elementary and Secondary School Emergency Relief Fund					70,875.11
8749 Other CARES Act Funding					202,798.00
8000 Total Revenue from Federal Sources					\$797,081.11
9000 Other Financing Sources					
9120 Proceeds from Refunding of Bonds		9,265,000.00			9,265,000.00
9130 Bond Premiums		734,110.25			734,110.25
9310 General Fund Transfers		250,000.00			250,000.00
9000 Total Other Financing Sources		\$10,249,110.25			\$10,249,110.25
Total From All Sources	\$12.88	\$10,249,597.52			\$49,641,686.31

LEA : 115218303 South Middleton SD

Printed 12/20/2021 4:36:26 PM

	<u>General Fund (10)</u>	<u>Student Sponsored Activity Fund (21)</u>	<u>Public Purpose Trust (27)</u>	<u>Other Compt Approved (28)</u>	<u>Athletic / Activity (29)</u>	<u>Capital Reserve (690. 1850) (31)</u>
Revenue from Local Sources	27,568,959.20	96,793.06				
Revenue from State Sources	10,929,242.54					
Revenue from Federal Sources	797,081.11					
Other Financing Sources						
Total From All Sources	\$39,295,282.85	\$96,793.06				

LEA : 115218303 South Middleton SD

Printed 12/20/2021 4:36:26 PM

	<u>Capital Reserve (1431)</u> <u>(32)</u>	<u>Other Capital Projects</u> <u>Fund (39)</u>	<u>Debt Service (40)</u>	<u>Permanent (90)</u>	<u>Total</u>
Revenue from Local Sources	12.88	487.27			27,666,252.41
Revenue from State Sources					10,929,242.54
Revenue from Federal Sources					797,081.11
Other Financing Sources		10,249,110.25			10,249,110.25
Total From All Sources	\$12.88	\$10,249,597.52			\$49,641,686.31

LEA : 115218303 South Middleton SD

Printed 12/20/2021 4:36:32 PM

General Fund (10)

1000 Instruction	Total
100 <u>Personnel Services – Salaries</u>	
100 Personnel Services – Salaries	10,268,919.57
Total Personnel Services – Salaries	\$10,268,919.57
200 <u>Personnel Services – Employee Benefits</u>	
210 Group Insurance – Contracted Provider	2,750,461.38
220 Social Security Contributions	783,906.95
230 PSERS Retirement Contributions	3,471,272.10
250 Unemployment Compensation	759.20
260 Workers' Compensation	59,771.35
270 Group Insurance – Self-Insurance	73,109.35
292 Health Savings Accounts	177,900.00
Total Personnel Services – Employee Benefits	\$7,317,180.33
300 <u>Purchased Professional and Technical Services</u>	
322 Professional Educational Services – Ius	380,514.16
323 Professional Educational Services – Other Educational Agencies	146,927.49
329 Professional Educational Services – Other	736,685.93
330 Other Professional Services	7,595.00
390 Other Purchased Professional and Technical Services	649.00
Total Purchased Professional and Technical Services	\$1,272,371.58
400 <u>Purchased Property Services</u>	
430 Repairs and Maintenance Services	4,378.89
Total Purchased Property Services	\$4,378.89
500 <u>Other Purchased Services</u>	
510 Student Transportation Services	2,923.29
561 Tuition To Other School Districts Within the State	899,897.44
562 Tuition To Pennsylvania Charter Schools	1,854,933.51
563 Tuition To Nonpublic Schools	452,949.87
564 Tuition To Career and Technology Centers	434,620.00
566 Tuition To Institutions of Higher Education and Technical Institutes	81,684.00
568 Tuition To Private Residential Rehabilitative Institutions (PRRI) [In-State] and Detention Centers	11,377.35
569 Tuition – Other	813,666.50
580 Travel	(19.35)
Total Other Purchased Services	\$4,552,032.61
600 <u>Supplies</u>	
610 General Supplies	444,347.65
640 Books and Periodicals	249,502.44
650 Supplies & Fees – Technology Related	143,104.89
Total Supplies	\$836,954.98
700 <u>Property</u>	
752 Capital Equipment – Original and Additional	9,461.42
762 Capitalized Equipment - Replacement	65,489.89
Total Property	\$74,951.31

LEA : 115218303 South Middleton SD

Printed 12/20/2021 4:36:32 PM

General Fund (10)		
1000 Instruction		<u>Total</u>
800 <u>Other Objects</u>		
810 Dues and Fees		3,947.72
890 Miscellaneous Expenditures		7,569.26
Total Other Objects		\$11,516.98
Total 1000 Instruction		\$24,338,306.25

LEA : 115218303 South Middleton SD

Printed 12/20/2021 4:36:32 PM

General Fund (10)

1100 Regular Programs – Elementary / Secondary

	Elementary	Secondary	Federal	Total
100 Personnel Services – Salaries				
100 Personnel Services – Salaries	3,986,088.53	4,229,497.65	176,095.52	8,391,681.70
Total Personnel Services – Salaries	\$3,986,088.53	\$4,229,497.65	\$176,095.52	\$8,391,681.70
200 Personnel Services – Employee Benefits				
210 Group Insurance – Contracted Provider	882,628.32	1,339,550.49	30,667.92	2,252,846.73
220 Social Security Contributions	311,642.44	323,570.64	4,573.25	639,786.33
230 PSERS Retirement Contributions	1,349,206.81	1,447,329.43	36,763.22	2,833,299.46
250 Unemployment Compensation	402.38	356.82		759.20
260 Workers' Compensation	17,347.40	17,186.01	14,852.94	49,386.35
270 Group Insurance – Self-Insurance	31,023.26	15,088.82	141.49	46,253.57
292 Health Savings Accounts	46,483.50	99,216.50	1,200.00	146,900.00
Total Personnel Services – Employee Benefits	\$2,638,734.11	\$3,242,298.71	\$88,198.82	\$5,969,231.64
300 Purchased Professional and Technical Services				
322 Professional Educational Services – Ius	111,676.91	4,800.97		116,477.88
323 Professional Educational Services – Other Educational Agencies	92.40	187.60	11,168.00	11,448.00
329 Professional Educational Services – Other	189,670.79	91,233.08		280,903.87
330 Other Professional Services	257.05	227.95		485.00
Total Purchased Professional and Technical Services	\$301,697.15	\$96,449.60	\$11,168.00	\$409,314.75
400 Purchased Property Services				
430 Repairs and Maintenance Services	751.47	3,627.42		4,378.89
Total Purchased Property Services	\$751.47	\$3,627.42		\$4,378.89
500 Other Purchased Services				
510 Student Transportation Services	97.68	1,000.00		1,097.68
561 Tuition To Other School Districts Within the State	97.86	191.48		289.34
562 Tuition To Pennsylvania Charter Schools	680,923.63	603,837.94		1,284,761.57
563 Tuition To Nonpublic Schools	180,778.15	6,825.06		187,603.21
568 Tuition To Private Residential Rehabilitative Institutions (PRRI) [In-State] and Detention Centers	6,030.00	5,347.35		11,377.35
569 Tuition – Other	309,667.90	503,373.60		813,041.50
580 Travel	479.65	(499.00)		(19.35)
Total Other Purchased Services	\$1,178,074.87	\$1,120,076.43		\$2,298,151.30
600 Supplies				
610 General Supplies	51,204.25	127,329.82	257,665.66	436,199.73
640 Books and Periodicals	114,495.08	134,192.50		248,687.58
650 Supplies & Fees – Technology Related	31,109.41	27,587.59	84,286.49	142,983.49
Total Supplies	\$196,808.74	\$289,109.91	\$341,952.15	\$827,870.80
700 Property				
752 Capital Equipment – Original and Additional		9,461.42		9,461.42
762 Capitalized Equipment - Replacement	34,709.64	30,780.25		65,489.89
Total Property	\$34,709.64	\$40,241.67		\$74,951.31
800 Other Objects				
810 Dues and Fees	347.74	3,599.98		3,947.72

LEA : 115218303 South Middleton SD

Printed 12/20/2021 4:36:32 PM

General Fund (10)

1100 Regular Programs – Elementary / Secondary	<u>Elementary</u>	<u>Secondary</u>	<u>Federal</u>	<u>Total</u>
800 <u>Other Objects</u>				
890 Miscellaneous Expenditures	293.45	546.55		840.00
Total Other Objects	\$641.19	\$4,146.53		\$4,787.72
Total 1100 Regular Programs – Elementary / Secondary	\$8,337,505.70	\$9,025,447.92	\$617,414.49	\$17,980,368.11

LEA : 115218303 South Middleton SD

Printed 12/20/2021 4:36:32 PM

General Fund (10)

1110 Regular Programs

	Elementary	Secondary	Federal	Total
100 <u>Personnel Services – Salaries</u>				
100 Personnel Services – Salaries	3,986,088.53	4,229,497.65	176,095.52	8,391,681.70
Total Personnel Services – Salaries	\$3,986,088.53	\$4,229,497.65	\$176,095.52	\$8,391,681.70
200 <u>Personnel Services – Employee Benefits</u>				
210 Group Insurance – Contracted Provider	882,628.32	1,339,550.49	30,667.92	2,252,846.73
220 Social Security Contributions	311,642.44	323,570.64	4,573.25	639,786.33
230 PSERS Retirement Contributions	1,349,206.81	1,447,329.43	36,763.22	2,833,299.46
250 Unemployment Compensation	402.38	356.82		759.20
260 Workers' Compensation	17,347.40	17,186.01	14,852.94	49,386.35
270 Group Insurance – Self-Insurance	31,023.26	15,088.82	141.49	46,253.57
292 Health Savings Accounts	46,483.50	99,216.50	1,200.00	146,900.00
Total Personnel Services – Employee Benefits	\$2,638,734.11	\$3,242,298.71	\$88,198.82	\$5,969,231.64
300 <u>Purchased Professional and Technical Services</u>				
322 Professional Educational Services – lus	111,676.91	4,800.97		116,477.88
323 Professional Educational Services – Other Educational Agencies	92.40	187.60	11,168.00	11,448.00
329 Professional Educational Services – Other	189,670.79	91,233.08		280,903.87
330 Other Professional Services	257.05	227.95		485.00
Total Purchased Professional and Technical Services	\$301,697.15	\$96,449.60	\$11,168.00	\$409,314.75
400 <u>Purchased Property Services</u>				
430 Repairs and Maintenance Services	751.47	3,627.42		4,378.89
Total Purchased Property Services	\$751.47	\$3,627.42		\$4,378.89
500 <u>Other Purchased Services</u>				
510 Student Transportation Services	97.68	1,000.00		1,097.68
561 Tuition To Other School Districts Within the State	97.86	191.48		289.34
562 Tuition To Pennsylvania Charter Schools	680,923.63	603,837.94		1,284,761.57
563 Tuition To Nonpublic Schools	180,778.15	6,825.06		187,603.21
568 Tuition To Private Residential Rehabilitative Institutions (PRRI) [In-State] and Detention Centers	6,030.00	5,347.35		11,377.35
569 Tuition – Other	309,667.90	503,373.60		813,041.50
580 Travel	479.65	(499.00)		(19.35)
Total Other Purchased Services	\$1,178,074.87	\$1,120,076.43		\$2,298,151.30
600 <u>Supplies</u>				
610 General Supplies	51,204.25	127,329.82	257,665.66	436,199.73
640 Books and Periodicals	114,495.08	134,192.50		248,687.58
650 Supplies & Fees – Technology Related	31,109.41	27,587.59	84,286.49	142,983.49
Total Supplies	\$196,808.74	\$289,109.91	\$341,952.15	\$827,870.80
700 <u>Property</u>				
752 Capital Equipment – Original and Additional		9,461.42		9,461.42
762 Capitalized Equipment - Replacement	34,709.64	30,780.25		65,489.89
Total Property	\$34,709.64	\$40,241.67		\$74,951.31
800 <u>Other Objects</u>				
810 Dues and Fees	347.74	3,599.98		3,947.72

LEA : 115218303 South Middleton SD

Printed 12/20/2021 4:36:32 PM

General Fund (10)

1110 Regular Programs

800 Other Objects

890 Miscellaneous Expenditures	Elementary	Secondary	Federal	Total
	293.45	546.55		840.00
Total Other Objects	\$641.19	\$4,146.53		\$4,787.72
Total 1110 Regular Programs	\$8,337,505.70	\$9,025,447.92	\$617,414.49	\$17,980,368.11

LEA : 115218303 South Middleton SD

Printed 12/20/2021 4:36:32 PM

General Fund (10)

1200 Special Programs – Elementary / Secondary	Elementary	Secondary	Federal	Total
100 Personnel Services – Salaries				
100 Personnel Services – Salaries	627,854.59	975,933.16	273,450.12	1,877,237.87
Total Personnel Services – Salaries	\$627,854.59	\$975,933.16	\$273,450.12	\$1,877,237.87
200 Personnel Services – Employee Benefits				
210 Group Insurance – Contracted Provider	179,592.06	287,694.04	30,328.55	497,614.65
220 Social Security Contributions	55,201.77	74,148.57	14,770.28	144,120.62
230 PSERS Retirement Contributions	270,654.62	329,560.90	37,757.12	637,972.64
260 Workers' Compensation	4,751.08	5,633.92		10,385.00
270 Group Insurance – Self-Insurance	8,485.67	18,370.11		26,855.78
292 Health Savings Accounts	14,250.30	16,749.70		31,000.00
Total Personnel Services – Employee Benefits	\$532,935.50	\$732,157.24	\$82,855.95	\$1,347,948.69
300 Purchased Professional and Technical Services				
322 Professional Educational Services – Ius	41,996.13	204,654.85	1,792.00	248,442.98
323 Professional Educational Services – Other Educational Agencies	95,441.76	40,037.73		135,479.49
329 Professional Educational Services – Other	238,618.72	217,163.34		455,782.06
390 Other Purchased Professional and Technical Services	649.00			649.00
Total Purchased Professional and Technical Services	\$376,705.61	\$461,855.92	\$1,792.00	\$840,353.53
500 Other Purchased Services				
510 Student Transportation Services		1,825.61		1,825.61
561 Tuition To Other School Districts Within the State	720,775.39	178,832.71		899,608.10
562 Tuition To Pennsylvania Charter Schools	302,191.13	267,980.81		570,171.94
563 Tuition To Nonpublic Schools	59,835.75	204,697.31		264,533.06
569 Tuition – Other		130.00		130.00
Total Other Purchased Services	\$1,082,802.27	\$653,466.44		\$1,736,268.71
600 Supplies				
610 General Supplies	3,867.28	4,052.64		7,919.92
640 Books and Periodicals	377.45	437.41		814.86
650 Supplies & Fees – Technology Related	91.43	29.97		121.40
Total Supplies	\$4,336.16	\$4,520.02		\$8,856.18
800 Other Objects				
890 Miscellaneous Expenditures	3,205.41	3,523.85		6,729.26
Total Other Objects	\$3,205.41	\$3,523.85		\$6,729.26
Total 1200 Special Programs – Elementary / Secondary	\$2,627,839.54	\$2,831,456.63	\$358,098.07	\$5,817,394.24

LEA : 115218303 South Middleton SD

Printed 12/20/2021 4:36:32 PM

General Fund (10)

1210 Life Skills Support

	<u>Elementary</u>	<u>Secondary</u>	<u>Federal</u>	<u>Total</u>
100 <u>Personnel Services – Salaries</u>				
100 Personnel Services – Salaries	26,565.31	254,470.85	602.00	281,638.16
Total Personnel Services – Salaries	\$26,565.31	\$254,470.85	\$602.00	\$281,638.16
200 <u>Personnel Services – Employee Benefits</u>				
210 Group Insurance – Contracted Provider	7,104.64	69,253.17		76,357.81
220 Social Security Contributions	2,054.96	19,231.12	46.06	21,332.14
230 PSERS Retirement Contributions	8,701.09	85,498.56	207.75	94,407.40
260 Workers' Compensation	174.24	1,411.76		1,586.00
270 Group Insurance – Self-Insurance	999.09	9,299.32		10,298.41
292 Health Savings Accounts	198.00	2,202.00		2,400.00
Total Personnel Services – Employee Benefits	\$19,232.02	\$186,895.93	\$253.81	\$206,381.76
300 <u>Purchased Professional and Technical Services</u>				
323 Professional Educational Services – Other Educational Agencies	80,380.69	33,374.00		113,754.69
329 Professional Educational Services – Other	16,465.05	33,429.05		49,894.10
Total Purchased Professional and Technical Services	\$96,845.74	\$66,803.05		\$163,648.79
500 <u>Other Purchased Services</u>				
561 Tuition To Other School Districts Within the State	84,958.07	15,805.49		100,763.56
562 Tuition To Pennsylvania Charter Schools	3,267.81	2,897.86		6,165.67
Total Other Purchased Services	\$88,225.88	\$18,703.35		\$106,929.23
600 <u>Supplies</u>				
610 General Supplies	436.87	2,311.64		2,748.51
640 Books and Periodicals	132.30	140.67		272.97
650 Supplies & Fees – Technology Related		29.97		29.97
Total Supplies	\$569.17	\$2,482.28		\$3,051.45
Total 1210 Life Skills Support	\$231,438.12	\$529,355.46	\$855.81	\$761,649.39

LEA : 115218303 South Middleton SD

Printed 12/20/2021 4:36:32 PM

General Fund (10)

1220 Sensory Support

	<u>Elementary</u>	<u>Secondary</u>	<u>Federal</u>	<u>Total</u>
100 <u>Personnel Services – Salaries</u>				
100 Personnel Services – Salaries	172,268.27	38,202.73		210,471.00
Total Personnel Services – Salaries	\$172,268.27	\$38,202.73		\$210,471.00
200 <u>Personnel Services – Employee Benefits</u>				
210 Group Insurance – Contracted Provider	42,288.25	4,995.71		47,283.96
220 Social Security Contributions	12,988.06	2,985.85		15,973.91
230 PSERS Retirement Contributions	59,465.15	13,189.82		72,654.97
260 Workers' Compensation	617.12	176.88		794.00
270 Group Insurance – Self-Insurance	953.15	141.95		1,095.10
292 Health Savings Accounts	4,299.00	201.00		4,500.00
Total Personnel Services – Employee Benefits	\$120,610.73	\$21,691.21		\$142,301.94
300 <u>Purchased Professional and Technical Services</u>				
323 Professional Educational Services – Other Educational Agencies	14,806.97	5,667.83		20,474.80
Total Purchased Professional and Technical Services	\$14,806.97	\$5,667.83		\$20,474.80
500 <u>Other Purchased Services</u>				
561 Tuition To Other School Districts Within the State	8,067.66			8,067.66
Total Other Purchased Services	\$8,067.66			\$8,067.66
600 <u>Supplies</u>				
610 General Supplies	196.96	52.87		249.83
640 Books and Periodicals	99.00			99.00
Total Supplies	\$295.96	\$52.87		\$348.83
800 <u>Other Objects</u>				
890 Miscellaneous Expenditures	3,128.90	3,475.10		6,604.00
Total Other Objects	\$3,128.90	\$3,475.10		\$6,604.00
Total 1220 Sensory Support	\$319,178.49	\$69,089.74		\$388,268.23

LEA : 115218303 South Middleton SD

Printed 12/20/2021 4:36:32 PM

General Fund (10)

1230 Emotional Support

	Elementary	Secondary	Federal	Total
100 <u>Personnel Services – Salaries</u>				
100 Personnel Services – Salaries	137,999.60	97,410.77	245.40	235,655.77
Total Personnel Services – Salaries	\$137,999.60	\$97,410.77	\$245.40	\$235,655.77
200 <u>Personnel Services – Employee Benefits</u>				
210 Group Insurance – Contracted Provider	13,413.07	27,425.86		40,838.93
220 Social Security Contributions	10,630.20	7,495.98		18,126.18
230 PSERS Retirement Contributions	46,691.98	33,516.65		80,208.63
260 Workers' Compensation	662.86	426.14		1,089.00
270 Group Insurance – Self-Insurance	558.91	634.50		1,193.41
292 Health Savings Accounts	2,394.00	1,806.00		4,200.00
Total Personnel Services – Employee Benefits	\$74,351.02	\$71,305.13		\$145,656.15
300 <u>Purchased Professional and Technical Services</u>				
322 Professional Educational Services – Ius	15,761.86	198,354.85		214,116.71
323 Professional Educational Services – Other Educational Agencies	254.10	995.90		1,250.00
329 Professional Educational Services – Other	18,566.06	9,676.29		28,242.35
Total Purchased Professional and Technical Services	\$34,582.02	\$209,027.04		\$243,609.06
500 <u>Other Purchased Services</u>				
510 Student Transportation Services		601.66		601.66
561 Tuition To Other School Districts Within the State	426,809.99	24,927.08		451,737.07
563 Tuition To Nonpublic Schools	59,835.75	204,697.31		264,533.06
569 Tuition – Other		130.00		130.00
Total Other Purchased Services	\$486,645.74	\$230,356.05		\$717,001.79
600 <u>Supplies</u>				
610 General Supplies	530.99	478.89		1,009.88
650 Supplies & Fees – Technology Related	91.43			91.43
Total Supplies	\$622.42	\$478.89		\$1,101.31
800 <u>Other Objects</u>				
890 Miscellaneous Expenditures	76.51			76.51
Total Other Objects	\$76.51			\$76.51
Total 1230 Emotional Support	\$734,277.31	\$608,577.88	\$245.40	\$1,343,100.59

LEA : 115218303 South Middleton SD

Printed 12/20/2021 4:36:32 PM

General Fund (10)

1240 Academic Support

	Elementary	Secondary	Federal	Total
100 <u>Personnel Services – Salaries</u>				
100 Personnel Services – Salaries	291,021.41	514,199.08	272,602.72	1,077,823.21
Total Personnel Services – Salaries	\$291,021.41	\$514,199.08	\$272,602.72	\$1,077,823.21
200 <u>Personnel Services – Employee Benefits</u>				
210 Group Insurance – Contracted Provider	116,786.10	162,099.66	30,328.55	309,214.31
220 Social Security Contributions	29,528.55	38,944.76	14,724.22	83,197.53
230 PSERS Retirement Contributions	155,796.40	173,607.39	37,549.37	366,953.16
260 Workers' Compensation	3,296.86	3,102.14		6,399.00
270 Group Insurance – Self-Insurance	5,974.52	7,687.92		13,662.44
292 Health Savings Accounts	7,359.30	7,940.70		15,300.00
Total Personnel Services – Employee Benefits	\$318,741.73	\$393,382.57	\$82,602.14	\$794,726.44
300 <u>Purchased Professional and Technical Services</u>				
322 Professional Educational Services – Ius	26,234.27		1,792.00	28,026.27
329 Professional Educational Services – Other	203,587.61	118,399.76		321,987.37
390 Other Purchased Professional and Technical Services	649.00			649.00
Total Purchased Professional and Technical Services	\$230,470.88	\$118,399.76	\$1,792.00	\$350,662.64
500 <u>Other Purchased Services</u>				
562 Tuition To Pennsylvania Charter Schools	298,923.32	265,082.95		564,006.27
Total Other Purchased Services	\$298,923.32	\$265,082.95		\$564,006.27
600 <u>Supplies</u>				
610 General Supplies	2,702.46	1,139.36		3,841.82
640 Books and Periodicals	146.15	296.74		442.89
Total Supplies	\$2,848.61	\$1,436.10		\$4,284.71
Total 1240 Academic Support	\$1,142,005.95	\$1,292,500.46	\$356,996.86	\$2,791,503.27

LEA : 115218303 South Middleton SD

Printed 12/20/2021 4:36:32 PM

General Fund (10)

1241 Learning Support – Public	Elementary	Secondary	Federal	Total
100 Personnel Services – Salaries				
100 Personnel Services – Salaries	237,657.09	446,523.03	272,602.72	956,782.84
Total Personnel Services – Salaries	\$237,657.09	\$446,523.03	\$272,602.72	\$956,782.84
200 Personnel Services – Employee Benefits				
210 Group Insurance – Contracted Provider	99,152.48	143,416.72	30,328.55	272,897.75
220 Social Security Contributions	24,849.86	33,726.97	14,724.22	73,301.05
230 PSERS Retirement Contributions	135,281.09	150,318.74	37,549.37	323,149.20
260 Workers' Compensation	3,001.28	2,869.72		5,871.00
270 Group Insurance – Self-Insurance	5,493.83	5,600.76		11,094.59
292 Health Savings Accounts	7,290.00	7,410.00		14,700.00
Total Personnel Services – Employee Benefits	\$275,068.54	\$343,342.91	\$82,602.14	\$701,013.59
300 Purchased Professional and Technical Services				
322 Professional Educational Services – Ius	26,234.27		1,792.00	28,026.27
329 Professional Educational Services – Other	203,587.61	118,399.76		321,987.37
390 Other Purchased Professional and Technical Services	649.00			649.00
Total Purchased Professional and Technical Services	\$230,470.88	\$118,399.76	\$1,792.00	\$350,662.64
500 Other Purchased Services				
562 Tuition To Pennsylvania Charter Schools	298,923.32	265,082.95		564,006.27
Total Other Purchased Services	\$298,923.32	\$265,082.95		\$564,006.27
600 Supplies				
610 General Supplies	2,702.46	1,139.36		3,841.82
640 Books and Periodicals	146.15	296.74		442.89
Total Supplies	\$2,848.61	\$1,436.10		\$4,284.71
Total 1241 Learning Support – Public	\$1,044,968.44	\$1,174,784.75	\$356,996.86	\$2,576,750.05

LEA : 115218303 South Middleton SD

Printed 12/20/2021 4:36:32 PM

General Fund (10)

1243 Gifted Support

	<u>Elementary</u>	<u>Secondary</u>	<u>Federal</u>	<u>Total</u>
100 <u>Personnel Services – Salaries</u>				
100 Personnel Services – Salaries	53,364.32	67,676.05		121,040.37
Total Personnel Services – Salaries	\$53,364.32	\$67,676.05		\$121,040.37
200 <u>Personnel Services – Employee Benefits</u>				
210 Group Insurance – Contracted Provider	17,633.62	18,682.94		36,316.56
220 Social Security Contributions	4,678.69	5,217.79		9,896.48
230 PSERS Retirement Contributions	20,515.31	23,288.65		43,803.96
260 Workers' Compensation	295.58	232.42		528.00
270 Group Insurance – Self-Insurance	480.69	2,087.16		2,567.85
292 Health Savings Accounts	69.30	530.70		600.00
Total Personnel Services – Employee Benefits	\$43,673.19	\$50,039.66		\$93,712.85
Total 1243 Gifted Support	\$97,037.51	\$117,715.71		\$214,753.22

LEA : 115218303 South Middleton SD

Printed 12/20/2021 4:36:32 PM

General Fund (10)

1270 Multi-Handicapped Support

	Elementary	Secondary	Federal	Total
100 <u>Personnel Services – Salaries</u>				
100 Personnel Services – Salaries		71,649.73		71,649.73
Total Personnel Services – Salaries		\$71,649.73		\$71,649.73
200 <u>Personnel Services – Employee Benefits</u>				
210 Group Insurance – Contracted Provider		23,919.64		23,919.64
220 Social Security Contributions		5,490.86		5,490.86
230 PSERS Retirement Contributions		23,748.48		23,748.48
260 Workers' Compensation		517.00		517.00
270 Group Insurance – Self-Insurance		606.42		606.42
292 Health Savings Accounts		4,600.00		4,600.00
Total Personnel Services – Employee Benefits		\$58,882.40		\$58,882.40
300 <u>Purchased Professional and Technical Services</u>				
322 Professional Educational Services – Ius		6,300.00		6,300.00
329 Professional Educational Services – Other		55,658.24		55,658.24
Total Purchased Professional and Technical Services		\$61,958.24		\$61,958.24
500 <u>Other Purchased Services</u>				
510 Student Transportation Services		1,223.95		1,223.95
561 Tuition To Other School Districts Within the State	200,939.67	138,100.14		339,039.81
Total Other Purchased Services	\$200,939.67	\$139,324.09		\$340,263.76
600 <u>Supplies</u>				
610 General Supplies		69.88		69.88
Total Supplies		\$69.88		\$69.88
800 <u>Other Objects</u>				
890 Miscellaneous Expenditures		48.75		48.75
Total Other Objects		\$48.75		\$48.75
Total 1270 Multi-Handicapped Support	\$200,939.67	\$331,933.09		\$532,872.76

LEA : 115218303 South Middleton SD

Printed 12/20/2021 4:36:32 PM

General Fund (10)

1300 Vocational Education

500 Other Purchased Services

	<u>Elementary</u>	<u>Secondary</u>	<u>Federal</u>	<u>Total</u>
564 Tuition To Career and Technology Centers		434,620.00		434,620.00
Total Other Purchased Services		\$434,620.00		\$434,620.00
Total 1300 Vocational Education		\$434,620.00		\$434,620.00

LEA : 115218303 South Middleton SD

Printed 12/20/2021 4:36:32 PM

General Fund (10)

1400 Other Instructional Programs – Elementary / Secondary	<u>Elementary</u>	<u>Secondary</u>	<u>Federal</u>	<u>Total</u>
300 <u>Purchased Professional and Technical Services</u>				
330 Other Professional Services		7,110.00		7,110.00
Total Purchased Professional and Technical Services		\$7,110.00		\$7,110.00
500 <u>Other Purchased Services</u>				
563 Tuition To Nonpublic Schools		813.60		813.60
569 Tuition – Other		495.00		495.00
Total Other Purchased Services		\$1,308.60		\$1,308.60
Total 1400 Other Instructional Programs – Elementary / Secondary		\$8,418.60		\$8,418.60

LEA : 115218303 South Middleton SD

Printed 12/20/2021 4:36:32 PM

General Fund (10)

1410 Drivers' Education

	<u>Elementary</u>	<u>Secondary</u>	<u>Federal</u>	<u>Total</u>
300 <u>Purchased Professional and Technical Services</u>				
330 Other Professional Services		7,110.00		7,110.00
Total Purchased Professional and Technical Services		\$7,110.00		\$7,110.00
Total 1410 Drivers' Education		\$7,110.00		\$7,110.00

LEA : 115218303 South Middleton SD

Printed 12/20/2021 4:36:32 PM

General Fund (10)

1440 Alternative Regular Education Programs

<u>Elementary</u>	<u>Secondary</u>	<u>Federal</u>	<u>Total</u>
-------------------	------------------	----------------	--------------

500 Other Purchased Services

563 Tuition To Nonpublic Schools	813.60		813.60
----------------------------------	--------	--	--------

569 Tuition – Other	495.00		495.00
---------------------	--------	--	--------

Total Other Purchased Services	\$1,308.60		\$1,308.60
Total 1440 Alternative Regular Education Programs	\$1,308.60		\$1,308.60

LEA : 115218303 South Middleton SD

Printed 12/20/2021 4:36:32 PM

General Fund (10)

1442 Alternative Education Programs

500 Other Purchased Services

	<u>Elementary</u>	<u>Secondary</u>	<u>Federal</u>	<u>Total</u>
563 Tuition To Nonpublic Schools		813.60		813.60
569 Tuition – Other		495.00		495.00
Total Other Purchased Services		\$1,308.60		\$1,308.60
Total 1442 Alternative Education Programs		\$1,308.60		\$1,308.60

LEA : 115218303 South Middleton SD

Printed 12/20/2021 4:36:32 PM

General Fund (10)

1500 Nonpublic School Programs	<u>Elementary</u>	<u>Secondary</u>	<u>Federal</u>	<u>Total</u>
300 <u>Purchased Professional and Technical Services</u>				
322 Professional Educational Services – lus				15,593.30
Total Purchased Professional and Technical Services				\$15,593.30
600 <u>Supplies</u>				
610 General Supplies				228.00
Total Supplies				\$228.00
Total 1500 Nonpublic School Programs				\$15,821.30

LEA : 115218303 South Middleton SD

Printed 12/20/2021 4:36:32 PM

General Fund (10)				
1600 Adult Education Programs	<u>Elementary</u>	<u>Secondary</u>	<u>Federal</u>	<u>Total</u>
500 <u>Other Purchased Services</u>				
566 Tuition To Institutions of Higher Education and Technical Institutes				81,684.00
Total Other Purchased Services				\$81,684.00
Total 1600 Adult Education Programs				\$81,684.00

LEA : 115218303 South Middleton SD

Printed 12/20/2021 4:36:40 PM

General Fund (10)

2000 Support Services

Total

100	<u>Personnel Services – Salaries</u>	
100	Personnel Services – Salaries	4,021,445.85
Total Personnel Services – Salaries		\$4,021,445.85
200	<u>Personnel Services – Employee Benefits</u>	
210	Group Insurance – Contracted Provider	970,968.50
220	Social Security Contributions	277,917.59
230	PSERS Retirement Contributions	1,311,222.35
240	Tuition Reimbursement	173,548.63
260	Workers' Compensation	20,442.00
270	Group Insurance – Self-Insurance	66,665.52
292	Health Savings Accounts	134,550.00
Total Personnel Services – Employee Benefits		\$2,955,314.59
300	<u>Purchased Professional and Technical Services</u>	
310	Official / Administrative Services	117,818.80
322	Professional Educational Services – Ius	120,186.51
323	Professional Educational Services – Other Educational Agencies	314.00
329	Professional Educational Services – Other	32,800.07
330	Other Professional Services	398,510.10
340	Technical Services	25,759.22
360	Employee Training and Development Services	904.57
390	Other Purchased Professional and Technical Services	62,908.74
Total Purchased Professional and Technical Services		\$759,202.01
400	<u>Purchased Property Services</u>	
410	Cleaning Services	703,154.13
420	Utility Services	34,644.27
430	Repairs and Maintenance Services	188,287.31
440	Rentals	114,028.19
460	Extermination Services	7,521.18
490	Other Purchased Property Services	5,824.00
Total Purchased Property Services		\$1,053,459.08
500	<u>Other Purchased Services</u>	
510	Student Transportation Services	2,753.40
513	Contracted Carriers	1,572,500.30
516	Student Transportation Services From the IU	33,295.14
520	Insurance – General	4,062.00
521	Fire Insurance	81,532.00
522	Automotive Liability Insurance	638.00
530	Communications	131,341.74
541	Advertising Related to Federal Grant Awards	2,068.23
580	Travel	4,471.95
595	IU Payments By Withholding	30,756.44
599	Other Miscellaneous Purchased Services	3,020.00
Total Other Purchased Services		\$1,866,439.20

LEA : 115218303 South Middleton SD

Printed 12/20/2021 4:36:40 PM

General Fund (10)

2000 Support Services

Total

600	<u>Supplies</u>	
610	General Supplies	616,790.06
620	Energy	453,252.13
630	Food	1,900.84
640	Books and Periodicals	31,734.53
650	Supplies & Fees – Technology Related	307,035.68
Total Supplies		\$1,410,713.24
700	<u>Property</u>	
756	Capitalized Technology Equipment – Original	12,341.17
762	Capitalized Equipment - Replacement	61,771.05
Total Property		\$74,112.22
800	<u>Other Objects</u>	
810	Dues and Fees	43,854.01
890	Miscellaneous Expenditures	24,624.40
Total Other Objects		\$68,478.41
Total 2000 Support Services		\$12,209,164.60

LEA : 115218303 South Middleton SD

Printed 12/20/2021 4:36:40 PM

General Fund (10)

2100 Support Services – Students	Elementary	Secondary	Federal	Total
100 Personnel Services – Salaries				
100 Personnel Services – Salaries	298,068.52	437,153.07	1,782.84	744,312.78
Total Personnel Services – Salaries	\$298,068.52	\$437,153.07	\$1,782.84	\$744,312.78
200 Personnel Services – Employee Benefits				
210 Group Insurance – Contracted Provider	80,162.96	116,438.70		196,601.66
220 Social Security Contributions	22,174.01	32,769.30	136.39	55,638.83
230 PSERS Retirement Contributions	99,877.92	148,234.76	615.26	252,319.22
260 Workers' Compensation	1,231.47	1,848.53		3,091.00
270 Group Insurance – Self-Insurance	6,030.24	8,966.07		14,996.31
292 Health Savings Accounts	10,744.00	11,056.00		21,800.00
Total Personnel Services – Employee Benefits	\$220,220.60	\$319,313.36	\$751.65	\$544,447.02
300 Purchased Professional and Technical Services				
329 Professional Educational Services – Other	3,180.00	2,820.00		10,395.00
330 Other Professional Services	9,540.00	8,460.00		18,000.00
390 Other Purchased Professional and Technical Services				150.00
Total Purchased Professional and Technical Services	\$12,720.00	\$11,280.00		\$28,545.00
500 Other Purchased Services				
510 Student Transportation Services		2,753.40		2,753.40
580 Travel	303.29	224.58		527.87
Total Other Purchased Services	\$303.29	\$2,977.98		\$3,281.27
600 Supplies				
610 General Supplies	4,173.24	5,416.70		9,589.94
640 Books and Periodicals		2,310.00		2,310.00
650 Supplies & Fees – Technology Related				59,749.50
Total Supplies	\$4,173.24	\$7,726.70		\$71,649.44
800 Other Objects				
810 Dues and Fees		(420.00)		(420.00)
890 Miscellaneous Expenditures	482.04	360.96		843.00
Total Other Objects	\$482.04	(\$59.04)		\$423.00
Total 2100 Support Services – Students	\$535,967.69	\$778,392.07	\$2,534.49	\$1,392,658.51

LEA : 115218303 South Middleton SD

Printed 12/20/2021 4:36:40 PM

General Fund (10)

2110 Supervision of Student Services	<u>Elementary</u>	<u>Secondary</u>	<u>Federal</u>	<u>Total</u>
100 <u>Personnel Services – Salaries</u>				
100 Personnel Services – Salaries	86,593.23	76,790.23		163,383.46
Total Personnel Services – Salaries	\$86,593.23	\$76,790.23		\$163,383.46
200 <u>Personnel Services – Employee Benefits</u>				
210 Group Insurance – Contracted Provider	21,483.15	19,051.09		40,534.24
220 Social Security Contributions	6,047.03	5,362.47		11,409.50
230 PSERS Retirement Contributions	27,922.84	24,761.75		52,684.59
260 Workers' Compensation	303.16	268.84		572.00
270 Group Insurance – Self-Insurance	2,162.82	1,917.97		4,080.79
292 Health Savings Accounts	3,816.00	3,384.00		7,200.00
Total Personnel Services – Employee Benefits	\$61,735.00	\$54,746.12		\$116,481.12
Total 2110 Supervision of Student Services	\$148,328.23	\$131,536.35		\$279,864.58

LEA : 115218303 South Middleton SD

Printed 12/20/2021 4:36:40 PM

General Fund (10)

2111 Supervision of Student Services – Head of Component	<u>Elementary</u>	<u>Secondary</u>	<u>Federal</u>	<u>Total</u>
100 <u>Personnel Services – Salaries</u>				
100 Personnel Services – Salaries	57,059.86	50,600.26		107,660.12
Total Personnel Services – Salaries	\$57,059.86	\$50,600.26		\$107,660.12
200 <u>Personnel Services – Employee Benefits</u>				
210 Group Insurance – Contracted Provider	9,574.60	8,490.67		18,065.27
220 Social Security Contributions	3,834.73	3,400.61		7,235.34
230 PSERS Retirement Contributions	17,730.90	15,723.62		33,454.52
260 Workers' Compensation	151.58	134.42		286.00
270 Group Insurance – Self-Insurance	743.52	659.35		1,402.87
292 Health Savings Accounts	1,908.00	1,692.00		3,600.00
Total Personnel Services – Employee Benefits	\$33,943.33	\$30,100.67		\$64,044.00
Total 2111 Supervision of Student Services – Head of Component	\$91,003.19	\$80,700.93		\$171,704.12

LEA : 115218303 South Middleton SD

Printed 12/20/2021 4:36:40 PM

General Fund (10)

2119 Supervision of Student Services – All Other Supervision	<u>Elementary</u>	<u>Secondary</u>	<u>Federal</u>	<u>Total</u>
100 <u>Personnel Services – Salaries</u>				
100 Personnel Services – Salaries	29,533.37	26,189.97		55,723.34
Total Personnel Services – Salaries	\$29,533.37	\$26,189.97		\$55,723.34
200 <u>Personnel Services – Employee Benefits</u>				
210 Group Insurance – Contracted Provider	11,908.55	10,560.42		22,468.97
220 Social Security Contributions	2,212.30	1,961.86		4,174.16
230 PSERS Retirement Contributions	10,191.94	9,038.13		19,230.07
260 Workers' Compensation	151.58	134.42		286.00
270 Group Insurance – Self-Insurance	1,419.30	1,258.62		2,677.92
292 Health Savings Accounts	1,908.00	1,692.00		3,600.00
Total Personnel Services – Employee Benefits	\$27,791.67	\$24,645.45		\$52,437.12
Total 2119 Supervision of Student Services – All Other Supervision	\$57,325.04	\$50,835.42		\$108,160.46

LEA : 115218303 South Middleton SD

Printed 12/20/2021 4:36:40 PM

General Fund (10)

2120 Guidance Services

	<u>Elementary</u>	<u>Secondary</u>	<u>Federal</u>	<u>Total</u>
100 <u>Personnel Services – Salaries</u>				
100 Personnel Services – Salaries	160,696.53	317,058.29	1,782.84	479,537.66
Total Personnel Services – Salaries	\$160,696.53	\$317,058.29	\$1,782.84	\$479,537.66
200 <u>Personnel Services – Employee Benefits</u>				
210 Group Insurance – Contracted Provider	45,001.15	85,901.61		130,902.76
220 Social Security Contributions	12,089.30	23,996.34	136.39	36,222.03
230 PSERS Retirement Contributions	55,472.21	109,451.62	615.26	165,539.09
260 Workers' Compensation	724.24	1,409.76		2,134.00
270 Group Insurance – Self-Insurance	2,491.86	6,285.59		8,777.45
292 Health Savings Accounts	4,596.00	5,604.00		10,200.00
Total Personnel Services – Employee Benefits	\$120,374.76	\$232,648.92	\$751.65	\$353,775.33
500 <u>Other Purchased Services</u>				
510 Student Transportation Services		2,753.40		2,753.40
580 Travel	50.04			50.04
Total Other Purchased Services	\$50.04	\$2,753.40		\$2,803.44
600 <u>Supplies</u>				
610 General Supplies	863.90	2,482.00		3,345.90
640 Books and Periodicals		2,310.00		2,310.00
Total Supplies	\$863.90	\$4,792.00		\$5,655.90
800 <u>Other Objects</u>				
810 Dues and Fees		(420.00)		(420.00)
890 Miscellaneous Expenditures	75.00			75.00
Total Other Objects	\$75.00	(\$420.00)		(\$345.00)
Total 2120 Guidance Services	\$282,060.23	\$556,832.61	\$2,534.49	\$841,427.33

LEA : 115218303 South Middleton SD

Printed 12/20/2021 4:36:40 PM

General Fund (10)

2130 Attendance Services

	<u>Elementary</u>	<u>Secondary</u>	<u>Federal</u>	<u>Total</u>
100 <u>Personnel Services – Salaries</u>				
100 Personnel Services – Salaries				7,308.35
Total Personnel Services – Salaries				\$7,308.35
200 <u>Personnel Services – Employee Benefits</u>				
220 Social Security Contributions				559.13
230 PSERS Retirement Contributions				3,591.28
260 Workers’ Compensation				11.00
Total Personnel Services – Employee Benefits				\$4,161.41
Total 2130 Attendance Services				\$11,469.76

LEA : 115218303 South Middleton SD

Printed 12/20/2021 4:36:40 PM

General Fund (10)

2140 Psychological Services	Elementary	Secondary	Federal	Total
100 <u>Personnel Services – Salaries</u>				
100 Personnel Services – Salaries	50,778.76	43,304.55		94,083.31
Total Personnel Services – Salaries	\$50,778.76	\$43,304.55		\$94,083.31
200 <u>Personnel Services – Employee Benefits</u>				
210 Group Insurance – Contracted Provider	13,678.66	11,486.00		25,164.66
220 Social Security Contributions	4,037.68	3,410.49		7,448.17
230 PSERS Retirement Contributions	16,482.87	14,021.39		30,504.26
260 Workers' Compensation	204.07	169.93		374.00
270 Group Insurance – Self-Insurance	1,375.56	762.51		2,138.07
292 Health Savings Accounts	2,332.00	2,068.00		4,400.00
Total Personnel Services – Employee Benefits	\$38,110.84	\$31,918.32		\$70,029.16
300 <u>Purchased Professional and Technical Services</u>				
329 Professional Educational Services – Other	3,180.00	2,820.00		6,000.00
330 Other Professional Services	9,540.00	8,460.00		18,000.00
Total Purchased Professional and Technical Services	\$12,720.00	\$11,280.00		\$24,000.00
500 <u>Other Purchased Services</u>				
580 Travel	253.25	224.58		477.83
Total Other Purchased Services	\$253.25	\$224.58		\$477.83
600 <u>Supplies</u>				
610 General Supplies	3,309.34	2,934.70		6,244.04
Total Supplies	\$3,309.34	\$2,934.70		\$6,244.04
800 <u>Other Objects</u>				
890 Miscellaneous Expenditures	407.04	360.96		768.00
Total Other Objects	\$407.04	\$360.96		\$768.00
Total 2140 Psychological Services	\$105,579.23	\$90,023.11		\$195,602.34

LEA : 115218303 South Middleton SD

Printed 12/20/2021 4:36:40 PM

General Fund (10)

2160 Social Work Services

<u>Elementary</u>	<u>Secondary</u>	<u>Federal</u>	<u>Total</u>
-------------------	------------------	----------------	--------------

300 Purchased Professional and Technical Services

329 Professional Educational Services – Other			4,395.00
---	--	--	----------

Total Purchased Professional and Technical Services			\$4,395.00
--	--	--	-------------------

Total 2160 Social Work Services			\$4,395.00
--	--	--	-------------------

LEA : 115218303 South Middleton SD

Printed 12/20/2021 4:36:40 PM

General Fund (10)

2170 Student Accounting Services

<u>Elementary</u>	<u>Secondary</u>	<u>Federal</u>	<u>Total</u>
-------------------	------------------	----------------	--------------

300 Purchased Professional and Technical Services

390 Other Purchased Professional and Technical Services			150.00
---	--	--	--------

Total Purchased Professional and Technical Services			\$150.00
--	--	--	-----------------

600 Supplies

650 Supplies & Fees – Technology Related			59,749.50
--	--	--	-----------

Total Supplies			\$59,749.50
-----------------------	--	--	--------------------

Total 2170 Student Accounting Services			\$59,899.50
---	--	--	--------------------

LEA : 115218303 South Middleton SD

Printed 12/20/2021 4:36:40 PM

General Fund (10)

2200 Support Services – Instructional Staff

	Elementary	Secondary	Federal	Total
100 <u>Personnel Services – Salaries</u>				
100 Personnel Services – Salaries	401,983.81	316,952.04	10,305.68	729,241.53
Total Personnel Services – Salaries	\$401,983.81	\$316,952.04	\$10,305.68	\$729,241.53
200 <u>Personnel Services – Employee Benefits</u>				
210 Group Insurance – Contracted Provider	86,914.39	78,256.16		165,170.55
220 Social Security Contributions	30,458.09	23,803.55	4,329.03	58,590.67
230 PSERS Retirement Contributions	134,347.54	105,489.58		239,837.12
240 Tuition Reimbursement	81,155.69	75,846.34		157,002.03
260 Workers' Compensation	1,675.10	1,386.90		3,062.00
270 Group Insurance – Self-Insurance	3,188.95	2,889.95		6,078.90
292 Health Savings Accounts	10,002.00	8,898.00		18,900.00
Total Personnel Services – Employee Benefits	\$347,741.76	\$296,570.48	\$4,329.03	\$648,641.27
300 <u>Purchased Professional and Technical Services</u>				
322 Professional Educational Services – Ius	63,698.85	56,487.66		120,186.51
329 Professional Educational Services – Other	2,017.29	20,177.79		22,195.08
330 Other Professional Services	6,386.50	5,663.50		12,050.00
340 Technical Services	5,896.32	5,228.81		11,125.13
360 Employee Training and Development Services	427.48	477.09		904.57
Total Purchased Professional and Technical Services	\$78,426.44	\$88,034.85		\$166,461.29
400 <u>Purchased Property Services</u>				
430 Repairs and Maintenance Services	28,184.82	24,348.43		52,533.25
440 Rentals	7,644.08	6,778.72		14,422.80
Total Purchased Property Services	\$35,828.90	\$31,127.15		\$66,956.05
500 <u>Other Purchased Services</u>				
530 Communications	37,833.52	33,550.48		71,384.00
580 Travel	1,793.08	1,590.09		3,383.17
599 Other Miscellaneous Purchased Services			3,020.00	3,020.00
Total Other Purchased Services	\$39,626.60	\$35,140.57	\$3,020.00	\$77,787.17
600 <u>Supplies</u>				
610 General Supplies	133,097.56	140,629.22	21,959.89	295,686.67
630 Food	1,007.45	893.39		1,900.84
640 Books and Periodicals	12,986.59	15,714.12		28,700.71
650 Supplies & Fees – Technology Related	22,055.43	19,558.60	122,187.81	163,801.84
Total Supplies	\$169,147.03	\$176,795.33	\$144,147.70	\$490,090.06
700 <u>Property</u>				
762 Capitalized Equipment - Replacement	4,584.37	4,065.38		8,649.75
Total Property	\$4,584.37	\$4,065.38		\$8,649.75
800 <u>Other Objects</u>				
810 Dues and Fees	635.16	386.79		1,021.95
890 Miscellaneous Expenditures	5,654.61	4,785.39		10,440.00
Total Other Objects	\$6,289.77	\$5,172.18		\$11,461.95
Total 2200 Support Services – Instructional Staff	\$1,083,628.68	\$953,857.98	\$161,802.41	\$2,199,289.07

LEA : 115218303 South Middleton SD

Printed 12/20/2021 4:36:40 PM

General Fund (10)

2210 Supervision of Educational Media Services	<u>Elementary</u>	<u>Secondary</u>	<u>Federal</u>	<u>Total</u>
600 <u>Supplies</u>				
610 General Supplies	1,537.00	1,363.00		2,900.00
Total Supplies	\$1,537.00	\$1,363.00		\$2,900.00
Total 2210 Supervision of Educational Media Services	\$1,537.00	\$1,363.00		\$2,900.00

LEA : 115218303 South Middleton SD

Printed 12/20/2021 4:36:40 PM

General Fund (10)

2211 Supervision of Educational Media Services – Head of Component

	<u>Elementary</u>	<u>Secondary</u>	<u>Federal</u>	<u>Total</u>
600 <u>Supplies</u>				
610 General Supplies	1,537.00	1,363.00		2,900.00
Total Supplies	\$1,537.00	\$1,363.00		\$2,900.00
Total 2211 Supervision of Educational Media Services – Head of Component	\$1,537.00	\$1,363.00		\$2,900.00

LEA : 115218303 South Middleton SD

Printed 12/20/2021 4:36:40 PM

General Fund (10)

2220 Technology Support Services	Elementary	Secondary	Federal	Total
100 Personnel Services – Salaries				
100 Personnel Services – Salaries	31,401.19	27,846.34		59,247.53
Total Personnel Services – Salaries	\$31,401.19	\$27,846.34		\$59,247.53
200 Personnel Services – Employee Benefits				
210 Group Insurance – Contracted Provider	1,818.11	1,612.29		3,430.40
220 Social Security Contributions	2,368.95	2,100.76		4,469.71
230 PSERS Retirement Contributions	8,279.91	7,342.57		15,622.48
260 Workers' Compensation	244.86	217.14		462.00
270 Group Insurance – Self-Insurance	136.64	121.18		257.82
292 Health Savings Accounts	1,908.00	1,692.00		3,600.00
Total Personnel Services – Employee Benefits	\$14,756.47	\$13,085.94		\$27,842.41
300 Purchased Professional and Technical Services				
322 Professional Educational Services – Ius	45,811.88	40,625.63		86,437.51
Total Purchased Professional and Technical Services	\$45,811.88	\$40,625.63		\$86,437.51
400 Purchased Property Services				
430 Repairs and Maintenance Services	1,581.39	1,402.36		2,983.75
440 Rentals	7,644.08	6,778.72		14,422.80
Total Purchased Property Services	\$9,225.47	\$8,181.08		\$17,406.55
600 Supplies				
610 General Supplies	1,546.49	20,462.14		22,008.63
650 Supplies & Fees – Technology Related			8,560.00	8,560.00
Total Supplies	\$1,546.49	\$20,462.14	\$8,560.00	\$30,568.63
700 Property				
762 Capitalized Equipment - Replacement	4,584.37	4,065.38		8,649.75
Total Property	\$4,584.37	\$4,065.38		\$8,649.75
Total 2220 Technology Support Services	\$107,325.87	\$114,266.51	\$8,560.00	\$230,152.38

LEA : 115218303 South Middleton SD

Printed 12/20/2021 4:36:40 PM

General Fund (10)

2240 Computer-Assisted Instruction Support Services	<u>Elementary</u>	<u>Secondary</u>	<u>Federal</u>	<u>Total</u>
100 <u>Personnel Services – Salaries</u>				
100 Personnel Services – Salaries	62,956.55	55,829.40		118,785.95
Total Personnel Services – Salaries	\$62,956.55	\$55,829.40		\$118,785.95
200 <u>Personnel Services – Employee Benefits</u>				
210 Group Insurance – Contracted Provider	20,372.44	18,066.13		38,438.57
220 Social Security Contributions	4,708.98	4,175.88		8,884.86
230 PSERS Retirement Contributions	21,074.69	18,688.87		39,763.56
260 Workers' Compensation	373.12	330.88		704.00
292 Health Savings Accounts	1,272.00	1,128.00		2,400.00
Total Personnel Services – Employee Benefits	\$47,801.23	\$42,389.76		\$90,190.99
300 <u>Purchased Professional and Technical Services</u>				
340 Technical Services	5,896.32	5,228.81		11,125.13
Total Purchased Professional and Technical Services	\$5,896.32	\$5,228.81		\$11,125.13
400 <u>Purchased Property Services</u>				
430 Repairs and Maintenance Services	26,603.43	22,946.07		49,549.50
Total Purchased Property Services	\$26,603.43	\$22,946.07		\$49,549.50
500 <u>Other Purchased Services</u>				
530 Communications	37,833.52	33,550.48		71,384.00
Total Other Purchased Services	\$37,833.52	\$33,550.48		\$71,384.00
600 <u>Supplies</u>				
610 General Supplies	125,131.96	110,034.13	15,230.92	250,397.01
650 Supplies & Fees – Technology Related	14,365.61	12,739.32	113,627.81	140,732.74
Total Supplies	\$139,497.57	\$122,773.45	\$128,858.73	\$391,129.75
Total 2240 Computer-Assisted Instruction Support Services	\$320,588.62	\$282,717.97	\$128,858.73	\$732,165.32

LEA : 115218303 South Middleton SD

Printed 12/20/2021 4:36:40 PM

General Fund (10)				
2250 School Library Services	Elementary	Secondary	Federal	Total
100 Personnel Services – Salaries				
100 Personnel Services – Salaries	171,444.00	112,546.54		283,990.54
Total Personnel Services – Salaries	\$171,444.00	\$112,546.54		\$283,990.54
200 Personnel Services – Employee Benefits				
210 Group Insurance – Contracted Provider	28,284.97	26,264.02		54,548.99
220 Social Security Contributions	13,283.53	8,580.43		21,863.96
230 PSERS Retirement Contributions	59,191.64	38,856.37		98,048.01
260 Workers' Compensation	602.38	435.62		1,038.00
270 Group Insurance – Self-Insurance	778.58	752.45		1,531.03
292 Health Savings Accounts	1,098.00	1,002.00		2,100.00
Total Personnel Services – Employee Benefits	\$103,239.10	\$75,890.89		\$179,129.99
300 Purchased Professional and Technical Services				
329 Professional Educational Services – Other	147.55	18,519.71		18,667.26
Total Purchased Professional and Technical Services	\$147.55	\$18,519.71		\$18,667.26
600 Supplies				
610 General Supplies	3,312.87	7,317.46		10,630.33
640 Books and Periodicals	10,747.66	15,588.99		26,336.65
Total Supplies	\$14,060.53	\$22,906.45		\$36,966.98
Total 2250 School Library Services	\$288,891.18	\$229,863.59		\$518,754.77

LEA : 115218303 South Middleton SD

Printed 12/20/2021 4:36:40 PM

General Fund (10)

2260 Instruction and Curriculum Development Services	Elementary	Secondary	Federal	Total
100 Personnel Services – Salaries				
100 Personnel Services – Salaries	125,887.22	115,059.61	10,305.68	251,252.51
Total Personnel Services – Salaries	\$125,887.22	\$115,059.61	\$10,305.68	\$251,252.51
200 Personnel Services – Employee Benefits				
210 Group Insurance – Contracted Provider	36,438.87	32,313.72		68,752.59
220 Social Security Contributions	9,309.02	8,512.65	4,329.03	22,150.70
230 PSERS Retirement Contributions	42,248.66	38,644.99		80,893.65
260 Workers' Compensation	454.74	403.26		858.00
270 Group Insurance – Self-Insurance	2,273.73	2,016.32		4,290.05
292 Health Savings Accounts	5,724.00	5,076.00		10,800.00
Total Personnel Services – Employee Benefits	\$96,449.02	\$86,966.94	\$4,329.03	\$187,744.99
300 Purchased Professional and Technical Services				
329 Professional Educational Services – Other	1,869.74	1,658.08		3,527.82
330 Other Professional Services	6,386.50	5,663.50		12,050.00
Total Purchased Professional and Technical Services	\$8,256.24	\$7,321.58		\$15,577.82
500 Other Purchased Services				
580 Travel	681.14	604.03		1,285.17
599 Other Miscellaneous Purchased Services			3,020.00	3,020.00
Total Other Purchased Services	\$681.14	\$604.03	\$3,020.00	\$4,305.17
600 Supplies				
610 General Supplies	1,398.92	1,301.46	6,728.97	9,429.35
630 Food	1,007.45	893.39		1,900.84
640 Books and Periodicals	2,216.30	105.06		2,321.36
650 Supplies & Fees – Technology Related	7,689.82	6,819.28		14,509.10
Total Supplies	\$12,312.49	\$9,119.19	\$6,728.97	\$28,160.65
800 Other Objects				
810 Dues and Fees	635.16	386.79		1,021.95
890 Miscellaneous Expenditures	942.34	835.66		1,778.00
Total Other Objects	\$1,577.50	\$1,222.45		\$2,799.95
Total 2260 Instruction and Curriculum Development Services	\$245,163.61	\$220,293.80	\$24,383.68	\$489,841.09

LEA : 115218303 South Middleton SD

Printed 12/20/2021 4:36:40 PM

General Fund (10)

2270 Instructional Staff Professional Development Services	Elementary	Secondary	Federal	Total
100 Personnel Services – Salaries				
100 Personnel Services – Salaries	10,294.85	5,670.15		15,965.00
Total Personnel Services – Salaries	\$10,294.85	\$5,670.15		\$15,965.00
200 Personnel Services – Employee Benefits				
220 Social Security Contributions	787.61	433.83		1,221.44
230 PSERS Retirement Contributions	3,552.64	1,956.78		5,509.42
240 Tuition Reimbursement	81,155.69	75,846.34		157,002.03
Total Personnel Services – Employee Benefits	\$85,495.94	\$78,236.95		\$163,732.89
300 Purchased Professional and Technical Services				
322 Professional Educational Services – Ius	17,886.97	15,862.03		33,749.00
360 Employee Training and Development Services	427.48	477.09		904.57
Total Purchased Professional and Technical Services	\$18,314.45	\$16,339.12		\$34,653.57
500 Other Purchased Services				
580 Travel	1,111.94	986.06		2,098.00
Total Other Purchased Services	\$1,111.94	\$986.06		\$2,098.00
600 Supplies				
610 General Supplies	170.32	151.03		321.35
640 Books and Periodicals	22.63	20.07		42.70
Total Supplies	\$192.95	\$171.10		\$364.05
800 Other Objects				
890 Miscellaneous Expenditures	4,712.27	3,949.73		8,662.00
Total Other Objects	\$4,712.27	\$3,949.73		\$8,662.00
Total 2270 Instructional Staff Professional Development Services	\$120,122.40	\$105,353.11		\$225,475.51

LEA : 115218303 South Middleton SD

Printed 12/20/2021 4:36:40 PM

General Fund (10)

2300 Support Services – Administration	Elementary	Secondary	Federal	Total
100 <u>Personnel Services – Salaries</u>				
100 Personnel Services – Salaries	454,068.54	498,926.08		1,287,059.07
Total Personnel Services – Salaries	\$454,068.54	\$498,926.08		\$1,287,059.07
200 <u>Personnel Services – Employee Benefits</u>				
210 Group Insurance – Contracted Provider	107,018.94	123,480.87		297,199.62
220 Social Security Contributions	33,503.63	37,221.32		94,899.60
230 PSERS Retirement Contributions	148,166.98	167,776.94		415,604.39
260 Workers' Compensation	2,027.52	1,976.48		5,016.00
270 Group Insurance – Self-Insurance	7,834.01	5,236.71		18,449.85
292 Health Savings Accounts	18,762.00	16,938.00		46,200.00
Total Personnel Services – Employee Benefits	\$317,313.08	\$352,630.32		\$877,369.46
300 <u>Purchased Professional and Technical Services</u>				
310 Official / Administrative Services				117,818.80
330 Other Professional Services				202,579.76
Total Purchased Professional and Technical Services				\$320,398.56
400 <u>Purchased Property Services</u>				
440 Rentals	41,617.93	44,569.67		86,187.60
Total Purchased Property Services	\$41,617.93	\$44,569.67		\$86,187.60
500 <u>Other Purchased Services</u>				
520 Insurance – General				4,062.00
530 Communications				5,209.32
541 Advertising Related to Federal Grant Awards				2,068.23
Total Other Purchased Services				\$11,339.55
600 <u>Supplies</u>				
610 General Supplies	8,421.54	18,512.23		36,466.21
640 Books and Periodicals		300.00		723.82
650 Supplies & Fees – Technology Related				3,400.00
Total Supplies	\$8,421.54	\$18,812.23		\$40,590.03
800 <u>Other Objects</u>				
810 Dues and Fees	1,553.42	2,873.58		35,986.94
890 Miscellaneous Expenditures		179.00		179.00
Total Other Objects	\$1,553.42	\$3,052.58		\$36,165.94
Total 2300 Support Services – Administration	\$822,974.51	\$917,990.88		\$2,659,110.21

LEA : 115218303 South Middleton SD

Printed 12/20/2021 4:36:40 PM

General Fund (10)				
2310 Board Services	<u>Elementary</u>	<u>Secondary</u>	<u>Federal</u>	<u>Total</u>
300 <u>Purchased Professional and Technical Services</u>				
330 Other Professional Services				43,375.00
Total Purchased Professional and Technical Services				\$43,375.00
500 <u>Other Purchased Services</u>				
520 Insurance – General				1,192.00
541 Advertising Related to Federal Grant Awards				2,068.23
Total Other Purchased Services				\$3,260.23
600 <u>Supplies</u>				
610 General Supplies				2,857.90
640 Books and Periodicals				329.50
650 Supplies & Fees – Technology Related				3,400.00
Total Supplies				\$6,587.40
800 <u>Other Objects</u>				
810 Dues and Fees				15,617.64
Total Other Objects				\$15,617.64
Total 2310 Board Services				\$68,840.27

LEA : 115218303 South Middleton SD

Printed 12/20/2021 4:36:40 PM

General Fund (10)

2330 Tax Assessment and Collection Services	<u>Elementary</u>	<u>Secondary</u>	<u>Federal</u>	<u>Total</u>
100 <u>Personnel Services – Salaries</u>				
100 Personnel Services – Salaries				28,000.00
Total Personnel Services – Salaries				\$28,000.00
200 <u>Personnel Services – Employee Benefits</u>				
220 Social Security Contributions				2,142.14
Total Personnel Services – Employee Benefits				\$2,142.14
300 <u>Purchased Professional and Technical Services</u>				
310 Official / Administrative Services				117,818.80
Total Purchased Professional and Technical Services				\$117,818.80
500 <u>Other Purchased Services</u>				
520 Insurance – General				2,870.00
530 Communications				5,209.32
Total Other Purchased Services				\$8,079.32
600 <u>Supplies</u>				
610 General Supplies				4,200.37
Total Supplies				\$4,200.37
Total 2330 Tax Assessment and Collection Services				\$160,240.63

LEA : 115218303 South Middleton SD

Printed 12/20/2021 4:36:40 PM

General Fund (10)

2340 Staff Relations and Negotiations Services

Elementary Secondary Federal Total

100 <u>Personnel Services – Salaries</u>				
100 Personnel Services – Salaries				71,899.34
Total Personnel Services – Salaries				\$71,899.34
200 <u>Personnel Services – Employee Benefits</u>				
210 Group Insurance – Contracted Provider				22,418.83
220 Social Security Contributions				5,245.18
230 PSERS Retirement Contributions				21,448.44
260 Workers' Compensation				286.00
270 Group Insurance – Self-Insurance				893.67
292 Health Savings Accounts				3,600.00
Total Personnel Services – Employee Benefits				\$53,892.12
Total 2340 Staff Relations and Negotiations Services				\$125,791.46

LEA : 115218303 South Middleton SD

Printed 12/20/2021 4:36:40 PM

General Fund (10)

2350 Legal and Accounting Services	<u>Elementary</u>	<u>Secondary</u>	<u>Federal</u>	<u>Total</u>
300 <u>Purchased Professional and Technical Services</u>				
330 Other Professional Services				159,204.76
Total Purchased Professional and Technical Services				\$159,204.76
Total 2350 Legal and Accounting Services				\$159,204.76

LEA : 115218303 South Middleton SD

Printed 12/20/2021 4:36:40 PM

General Fund (10)

2360 Office of the Superintendent / Executive Director Services	<u>Elementary</u>	<u>Secondary</u>	<u>Federal</u>	<u>Total</u>
100 <u>Personnel Services – Salaries</u>				
100 Personnel Services – Salaries				215,789.82
Total Personnel Services – Salaries				\$215,789.82
200 <u>Personnel Services – Employee Benefits</u>				
210 Group Insurance – Contracted Provider				33,778.38
220 Social Security Contributions				15,511.60
230 PSERS Retirement Contributions				72,131.38
260 Workers' Compensation				594.00
270 Group Insurance – Self-Insurance				4,485.46
292 Health Savings Accounts				6,600.00
Total Personnel Services – Employee Benefits				\$133,100.82
600 <u>Supplies</u>				
610 General Supplies				2,474.17
640 Books and Periodicals				94.32
Total Supplies				\$2,568.49
800 <u>Other Objects</u>				
810 Dues and Fees				15,942.30
Total Other Objects				\$15,942.30
Total 2360 Office of the Superintendent / Executive Director Services				\$367,401.43

LEA : 115218303 South Middleton SD

Printed 12/20/2021 4:36:40 PM

General Fund (10)

2380 Office of the Principal Services	<u>Elementary</u>	<u>Secondary</u>	<u>Federal</u>	<u>Total</u>
100 <u>Personnel Services – Salaries</u>				
100 Personnel Services – Salaries	454,068.54	498,926.08		952,994.62
Total Personnel Services – Salaries	\$454,068.54	\$498,926.08		\$952,994.62
200 <u>Personnel Services – Employee Benefits</u>				
210 Group Insurance – Contracted Provider	107,018.94	123,480.87		230,499.81
220 Social Security Contributions	33,503.63	37,221.32		70,724.95
230 PSERS Retirement Contributions	148,166.98	167,776.94		315,943.92
260 Workers' Compensation	2,027.52	1,976.48		4,004.00
270 Group Insurance – Self-Insurance	7,834.01	5,236.71		13,070.72
292 Health Savings Accounts	18,762.00	16,938.00		35,700.00
Total Personnel Services – Employee Benefits	\$317,313.08	\$352,630.32		\$669,943.40
400 <u>Purchased Property Services</u>				
440 Rentals	41,617.93	44,569.67		86,187.60
Total Purchased Property Services	\$41,617.93	\$44,569.67		\$86,187.60
600 <u>Supplies</u>				
610 General Supplies	8,421.54	18,512.23		26,933.77
640 Books and Periodicals		300.00		300.00
Total Supplies	\$8,421.54	\$18,812.23		\$27,233.77
800 <u>Other Objects</u>				
810 Dues and Fees	1,553.42	2,873.58		4,427.00
890 Miscellaneous Expenditures		179.00		179.00
Total Other Objects	\$1,553.42	\$3,052.58		\$4,606.00
Total 2380 Office of the Principal Services	\$822,974.51	\$917,990.88		\$1,740,965.39

LEA : 115218303 South Middleton SD

Printed 12/20/2021 4:36:40 PM

General Fund (10)

2390 Other Administration Services	<u>Elementary</u>	<u>Secondary</u>	<u>Federal</u>	<u>Total</u>
100 <u>Personnel Services – Salaries</u>				
100 Personnel Services – Salaries				18,375.29
Total Personnel Services – Salaries				\$18,375.29
200 <u>Personnel Services – Employee Benefits</u>				
210 Group Insurance – Contracted Provider				10,502.60
220 Social Security Contributions				1,275.73
230 PSERS Retirement Contributions				6,080.65
260 Workers' Compensation				132.00
292 Health Savings Accounts				300.00
Total Personnel Services – Employee Benefits				\$18,290.98
Total 2390 Other Administration Services				\$36,666.27

LEA : 115218303 South Middleton SD

Printed 12/20/2021 4:36:40 PM

General Fund (10)

2400 Support Services – Pupil Health	<u>Elementary</u>	<u>Secondary</u>	<u>Federal</u>	<u>Total</u>
100 <u>Personnel Services – Salaries</u>				
100 Personnel Services – Salaries				272,150.03
Total Personnel Services – Salaries				\$272,150.03
200 <u>Personnel Services – Employee Benefits</u>				
210 Group Insurance – Contracted Provider				82,320.00
220 Social Security Contributions				19,816.15
230 PSERS Retirement Contributions				89,556.42
260 Workers' Compensation				1,518.00
270 Group Insurance – Self-Insurance				7,335.89
292 Health Savings Accounts				8,400.00
Total Personnel Services – Employee Benefits				\$208,946.46
300 <u>Purchased Professional and Technical Services</u>				
323 Professional Educational Services – Other Educational Agencies				314.00
329 Professional Educational Services – Other				209.99
330 Other Professional Services				142,387.34
Total Purchased Professional and Technical Services				\$142,911.33
600 <u>Supplies</u>				
610 General Supplies				8,051.49
Total Supplies				\$8,051.49
800 <u>Other Objects</u>				
810 Dues and Fees				37.48
890 Miscellaneous Expenditures				1,196.00
Total Other Objects				\$1,233.48
Total 2400 Support Services – Pupil Health				\$633,292.79

LEA : 115218303 South Middleton SD

Printed 12/20/2021 4:36:40 PM

General Fund (10)

2420 Medical Services

<u>Elementary</u>	<u>Secondary</u>	<u>Federal</u>	<u>Total</u>
-------------------	------------------	----------------	--------------

300 Purchased Professional and Technical Services

330 Other Professional Services			141,883.34
---------------------------------	--	--	------------

Total Purchased Professional and Technical Services			\$141,883.34
--	--	--	---------------------

Total 2420 Medical Services			\$141,883.34
------------------------------------	--	--	---------------------

LEA : 115218303 South Middleton SD

Printed 12/20/2021 4:36:40 PM

General Fund (10)

2440 Nursing Services

	<u>Elementary</u>	<u>Secondary</u>	<u>Federal</u>	<u>Total</u>
100 <u>Personnel Services – Salaries</u>				
100 Personnel Services – Salaries				272,150.03
Total Personnel Services – Salaries				\$272,150.03
200 <u>Personnel Services – Employee Benefits</u>				
210 Group Insurance – Contracted Provider				82,320.00
220 Social Security Contributions				19,816.15
230 PSERS Retirement Contributions				89,556.42
260 Workers' Compensation				1,518.00
270 Group Insurance – Self-Insurance				7,335.89
292 Health Savings Accounts				8,400.00
Total Personnel Services – Employee Benefits				\$208,946.46
300 <u>Purchased Professional and Technical Services</u>				
323 Professional Educational Services – Other Educational Agencies				314.00
329 Professional Educational Services – Other				209.99
330 Other Professional Services				504.00
Total Purchased Professional and Technical Services				\$1,027.99
600 <u>Supplies</u>				
610 General Supplies				8,051.49
Total Supplies				\$8,051.49
800 <u>Other Objects</u>				
810 Dues and Fees				37.48
890 Miscellaneous Expenditures				1,196.00
Total Other Objects				\$1,233.48
Total 2440 Nursing Services				\$491,409.45

LEA : 115218303 South Middleton SD

Printed 12/20/2021 4:36:40 PM

General Fund (10)

2500 Support Services – Business	Elementary	Secondary	Federal	Total
100 <u>Personnel Services – Salaries</u>				
100 Personnel Services – Salaries				311,187.90
Total Personnel Services – Salaries				\$311,187.90
200 <u>Personnel Services – Employee Benefits</u>				
210 Group Insurance – Contracted Provider				60,865.98
220 Social Security Contributions				21,876.38
230 PSERS Retirement Contributions				95,735.41
260 Workers' Compensation				1,672.00
270 Group Insurance – Self-Insurance				10,603.02
292 Health Savings Accounts				17,500.00
Total Personnel Services – Employee Benefits				\$208,252.79
300 <u>Purchased Professional and Technical Services</u>				
330 Other Professional Services				23,493.00
340 Technical Services				12,334.09
Total Purchased Professional and Technical Services				\$35,827.09
400 <u>Purchased Property Services</u>				
440 Rentals				11,289.39
Total Purchased Property Services				\$11,289.39
500 <u>Other Purchased Services</u>				
530 Communications				9,778.59
580 Travel				553.81
Total Other Purchased Services				\$10,332.40
600 <u>Supplies</u>				
610 General Supplies				12,668.76
650 Supplies & Fees – Technology Related				72,017.34
Total Supplies				\$84,686.10
800 <u>Other Objects</u>				
810 Dues and Fees				5,917.64
890 Miscellaneous Expenditures				11,966.40
Total Other Objects				\$17,884.04
Total 2500 Support Services – Business				\$679,459.71

LEA : 115218303 South Middleton SD

Printed 12/20/2021 4:36:40 PM

General Fund (10)				
2510 Fiscal Services	<u>Elementary</u>	<u>Secondary</u>	<u>Federal</u>	<u>Total</u>
100 <u>Personnel Services – Salaries</u>				
100 Personnel Services – Salaries				311,187.90
Total Personnel Services – Salaries				\$311,187.90
200 <u>Personnel Services – Employee Benefits</u>				
210 Group Insurance – Contracted Provider				60,865.98
220 Social Security Contributions				21,876.38
230 PSERS Retirement Contributions				95,735.41
260 Workers' Compensation				1,672.00
270 Group Insurance – Self-Insurance				10,603.02
292 Health Savings Accounts				17,500.00
Total Personnel Services – Employee Benefits				\$208,252.79
300 <u>Purchased Professional and Technical Services</u>				
330 Other Professional Services				23,493.00
340 Technical Services				12,334.09
Total Purchased Professional and Technical Services				\$35,827.09
400 <u>Purchased Property Services</u>				
440 Rentals				11,289.39
Total Purchased Property Services				\$11,289.39
500 <u>Other Purchased Services</u>				
530 Communications				9,728.59
580 Travel				553.81
Total Other Purchased Services				\$10,282.40
600 <u>Supplies</u>				
610 General Supplies				12,668.76
650 Supplies & Fees – Technology Related				72,017.34
Total Supplies				\$84,686.10
800 <u>Other Objects</u>				
810 Dues and Fees				5,917.64
890 Miscellaneous Expenditures				11,966.40
Total Other Objects				\$17,884.04
Total 2510 Fiscal Services				\$679,409.71

LEA : 115218303 South Middleton SD

Printed 12/20/2021 4:36:40 PM

General Fund (10)

2511 Supervision of Fiscal Services - Head of Component

Elementary Secondary Federal Total

100 <u>Personnel Services – Salaries</u>				
100 Personnel Services – Salaries				99,649.50
Total Personnel Services – Salaries				\$99,649.50
200 <u>Personnel Services – Employee Benefits</u>				
210 Group Insurance – Contracted Provider				16,990.24
220 Social Security Contributions				7,147.76
230 PSERS Retirement Contributions				32,822.54
260 Workers' Compensation				286.00
270 Group Insurance – Self-Insurance				715.71
292 Health Savings Accounts				3,600.00
Total Personnel Services – Employee Benefits				\$61,562.25
Total 2511 Supervision of Fiscal Services - Head of Component				\$161,211.75

LEA : 115218303 South Middleton SD

Printed 12/20/2021 4:36:40 PM

General Fund (10)

2513 Receiving and Disbursing Funds Services	<u>Elementary</u>	<u>Secondary</u>	<u>Federal</u>	<u>Total</u>
100 <u>Personnel Services – Salaries</u>				
100 Personnel Services – Salaries				71,467.66
Total Personnel Services – Salaries				\$71,467.66
200 <u>Personnel Services – Employee Benefits</u>				
210 Group Insurance – Contracted Provider				8,066.83
220 Social Security Contributions				5,387.98
230 PSERS Retirement Contributions				23,455.63
260 Workers' Compensation				572.00
270 Group Insurance – Self-Insurance				303.92
292 Health Savings Accounts				1,800.00
Total Personnel Services – Employee Benefits				\$39,586.36
Total 2513 Receiving and Disbursing Funds Services				\$111,054.02

LEA : 115218303 South Middleton SD

Printed 12/20/2021 4:36:40 PM

General Fund (10)

2514 Payroll Services

	<u>Elementary</u>	<u>Secondary</u>	<u>Federal</u>	<u>Total</u>
100 <u>Personnel Services – Salaries</u>				
100 Personnel Services – Salaries				74,701.54
Total Personnel Services – Salaries				\$74,701.54
200 <u>Personnel Services – Employee Benefits</u>				
210 Group Insurance – Contracted Provider				17,959.26
220 Social Security Contributions				4,415.02
230 PSERS Retirement Contributions				18,166.34
260 Workers' Compensation				253.00
270 Group Insurance – Self-Insurance				17.00
292 Health Savings Accounts				7,000.00
Total Personnel Services – Employee Benefits				\$47,810.62
Total 2514 Payroll Services				\$122,512.16

LEA : 115218303 South Middleton SD

Printed 12/20/2021 4:36:40 PM

General Fund (10)				
2515 Financial Accounting Services	<u>Elementary</u>	<u>Secondary</u>	<u>Federal</u>	<u>Total</u>
100 <u>Personnel Services – Salaries</u>				
100 Personnel Services – Salaries				48,295.61
Total Personnel Services – Salaries				\$48,295.61
200 <u>Personnel Services – Employee Benefits</u>				
210 Group Insurance – Contracted Provider				17,849.65
220 Social Security Contributions				3,619.50
230 PSERS Retirement Contributions				15,398.81
260 Workers' Compensation				286.00
270 Group Insurance – Self-Insurance				9,566.39
292 Health Savings Accounts				5,100.00
Total Personnel Services – Employee Benefits				\$51,820.35
300 <u>Purchased Professional and Technical Services</u>				
330 Other Professional Services				23,493.00
340 Technical Services				12,334.09
Total Purchased Professional and Technical Services				\$35,827.09
400 <u>Purchased Property Services</u>				
440 Rentals				11,289.39
Total Purchased Property Services				\$11,289.39
500 <u>Other Purchased Services</u>				
530 Communications				9,728.59
580 Travel				553.81
Total Other Purchased Services				\$10,282.40
600 <u>Supplies</u>				
610 General Supplies				12,668.76
650 Supplies & Fees – Technology Related				72,017.34
Total Supplies				\$84,686.10
800 <u>Other Objects</u>				
810 Dues and Fees				5,917.64
890 Miscellaneous Expenditures				11,966.40
Total Other Objects				\$17,884.04
Total 2515 Financial Accounting Services				\$260,084.98

LEA : 115218303 South Middleton SD

Printed 12/20/2021 4:36:40 PM

General Fund (10)

2516 Internal Auditing Services	<u>Elementary</u>	<u>Secondary</u>	<u>Federal</u>	<u>Total</u>
100 <u>Personnel Services – Salaries</u>				
100 Personnel Services – Salaries				17,073.59
Total Personnel Services – Salaries				\$17,073.59
200 <u>Personnel Services – Employee Benefits</u>				
220 Social Security Contributions				1,306.12
230 PSERS Retirement Contributions				5,892.09
260 Workers’ Compensation				275.00
Total Personnel Services – Employee Benefits				\$7,473.21
Total 2516 Internal Auditing Services				\$24,546.80

LEA : 115218303 South Middleton SD

Printed 12/20/2021 4:36:40 PM

General Fund (10)

2590 Other Support Services – Business	<u>Elementary</u>	<u>Secondary</u>	<u>Federal</u>	<u>Total</u>
500 <u>Other Purchased Services</u>				
530 Communications				50.00
Total Other Purchased Services				\$50.00
Total 2590 Other Support Services – Business				\$50.00

LEA : 115218303 South Middleton SD

Printed 12/20/2021 4:36:40 PM

General Fund (10)

2600 Operation and Maintenance of Plant Services	Elementary	Secondary	Federal	Total
100 <u>Personnel Services – Salaries</u>				
100 Personnel Services – Salaries				587,576.47
Total Personnel Services – Salaries				\$587,576.47
200 <u>Personnel Services – Employee Benefits</u>				
210 Group Insurance – Contracted Provider				168,681.49
220 Social Security Contributions				20,217.39
230 PSERS Retirement Contributions				201,397.04
260 Workers' Compensation				4,365.00
270 Group Insurance – Self-Insurance				9,201.55
292 Health Savings Accounts				21,750.00
Total Personnel Services – Employee Benefits				\$425,612.47
300 <u>Purchased Professional and Technical Services</u>				
390 Other Purchased Professional and Technical Services				62,758.74
Total Purchased Professional and Technical Services				\$62,758.74
400 <u>Purchased Property Services</u>				
410 Cleaning Services				703,154.13
420 Utility Services				34,644.27
430 Repairs and Maintenance Services				135,754.06
440 Rentals				2,128.40
460 Extermination Services				7,521.18
490 Other Purchased Property Services				5,824.00
Total Purchased Property Services				\$889,026.04
500 <u>Other Purchased Services</u>				
521 Fire Insurance				81,532.00
522 Automotive Liability Insurance				638.00
530 Communications				44,969.83
580 Travel				7.10
Total Other Purchased Services				\$127,146.93
600 <u>Supplies</u>				
610 General Supplies	126,601.35	122,728.95	4,323.43	253,653.73
620 Energy				453,252.13
Total Supplies	\$126,601.35	\$122,728.95	\$4,323.43	\$706,905.86
700 <u>Property</u>				
756 Capitalized Technology Equipment – Original				12,341.17
762 Capitalized Equipment - Replacement				53,121.30
Total Property				\$65,462.47
800 <u>Other Objects</u>				
810 Dues and Fees				1,310.00
Total Other Objects				\$1,310.00
Total 2600 Operation and Maintenance of Plant Services	\$126,601.35	\$122,728.95	\$4,323.43	\$2,865,798.98

LEA : 115218303 South Middleton SD

Printed 12/20/2021 4:36:40 PM

General Fund (10)

2610 Supervision of Operation and Maintenance of Plant Services	<u>Elementary</u>	<u>Secondary</u>	<u>Federal</u>	<u>Total</u>
100 <u>Personnel Services – Salaries</u>				
100 Personnel Services – Salaries				65,728.13
Total Personnel Services – Salaries				\$65,728.13
200 <u>Personnel Services – Employee Benefits</u>				
210 Group Insurance – Contracted Provider				8,530.36
220 Social Security Contributions				4,888.39
230 PSERS Retirement Contributions				22,682.79
260 Workers' Compensation				286.00
292 Health Savings Accounts				1,800.00
Total Personnel Services – Employee Benefits				\$38,187.54
Total 2610 Supervision of Operation and Maintenance of Plant Services				\$103,915.67

LEA : 115218303 South Middleton SD

Printed 12/20/2021 4:36:40 PM

General Fund (10)

2611 Supervision of Operation and Maintenance of Plant Services – Head of Component	<u>Elementary</u>	<u>Secondary</u>	<u>Federal</u>	<u>Total</u>
100 <u>Personnel Services – Salaries</u>				
100 Personnel Services – Salaries				65,728.13
Total Personnel Services – Salaries				\$65,728.13
200 <u>Personnel Services – Employee Benefits</u>				
210 Group Insurance – Contracted Provider				8,530.36
220 Social Security Contributions				4,888.39
230 PSERS Retirement Contributions				22,682.79
260 Workers' Compensation				286.00
292 Health Savings Accounts				1,800.00
Total Personnel Services – Employee Benefits				\$38,187.54
Total 2611 Supervision of Operation and Maintenance of Plant Services – Head of Component				\$103,915.67

LEA : 115218303 South Middleton SD

Printed 12/20/2021 4:36:40 PM

General Fund (10)

2620 Operation of Buildings Services	Elementary	Secondary	Federal	Total
100 <u>Personnel Services – Salaries</u>				
100 Personnel Services – Salaries				283,221.19
Total Personnel Services – Salaries				\$283,221.19
200 <u>Personnel Services – Employee Benefits</u>				
210 Group Insurance – Contracted Provider				102,387.98
220 Social Security Contributions				(2,372.71)
230 PSERS Retirement Contributions				97,041.97
260 Workers' Compensation				2,740.00
270 Group Insurance – Self-Insurance				8,196.34
292 Health Savings Accounts				11,550.00
Total Personnel Services – Employee Benefits				\$219,543.58
300 <u>Purchased Professional and Technical Services</u>				
390 Other Purchased Professional and Technical Services				62,758.74
Total Purchased Professional and Technical Services				\$62,758.74
400 <u>Purchased Property Services</u>				
410 Cleaning Services				703,154.13
420 Utility Services				34,644.27
430 Repairs and Maintenance Services				72,918.97
440 Rentals				2,128.40
460 Extermination Services				7,521.18
490 Other Purchased Property Services				5,824.00
Total Purchased Property Services				\$826,190.95
500 <u>Other Purchased Services</u>				
521 Fire Insurance				81,532.00
522 Automotive Liability Insurance				638.00
530 Communications				44,969.83
580 Travel				7.10
Total Other Purchased Services				\$127,146.93
600 <u>Supplies</u>				
610 General Supplies	78,611.33	80,171.75	4,323.43	163,106.51
620 Energy				447,811.63
Total Supplies	\$78,611.33	\$80,171.75	\$4,323.43	\$610,918.14
800 <u>Other Objects</u>				
810 Dues and Fees				1,310.00
Total Other Objects				\$1,310.00
Total 2620 Operation of Buildings Services	\$78,611.33	\$80,171.75	\$4,323.43	\$2,131,089.53

LEA : 115218303 South Middleton SD

Printed 12/20/2021 4:36:40 PM

General Fund (10)

2630 Care and Upkeep of Grounds Services	<u>Elementary</u>	<u>Secondary</u>	<u>Federal</u>	<u>Total</u>
100 <u>Personnel Services – Salaries</u>				
100 Personnel Services – Salaries				19,488.90
Total Personnel Services – Salaries				\$19,488.90
200 <u>Personnel Services – Employee Benefits</u>				
220 Social Security Contributions				1,490.87
230 PSERS Retirement Contributions				6,306.35
260 Workers’ Compensation				275.00
Total Personnel Services – Employee Benefits				\$8,072.22
600 <u>Supplies</u>				
610 General Supplies	14,786.12	13,112.22		27,898.34
Total Supplies	\$14,786.12	\$13,112.22		\$27,898.34
Total 2630 Care and Upkeep of Grounds Services	\$14,786.12	\$13,112.22		\$55,459.46

LEA : 115218303 South Middleton SD

Printed 12/20/2021 4:36:40 PM

General Fund (10)

2640 Care and Upkeep of Equipment Services	<u>Elementary</u>	<u>Secondary</u>	<u>Federal</u>	<u>Total</u>
100 <u>Personnel Services – Salaries</u>				
100 Personnel Services – Salaries				219,138.25
Total Personnel Services – Salaries				\$219,138.25
200 <u>Personnel Services – Employee Benefits</u>				
210 Group Insurance – Contracted Provider				57,763.15
220 Social Security Contributions				16,210.84
230 PSERS Retirement Contributions				75,365.93
260 Workers' Compensation				1,064.00
270 Group Insurance – Self-Insurance				1,005.21
292 Health Savings Accounts				8,400.00
Total Personnel Services – Employee Benefits				\$159,809.13
400 <u>Purchased Property Services</u>				
430 Repairs and Maintenance Services				62,835.09
Total Purchased Property Services				\$62,835.09
600 <u>Supplies</u>				
610 General Supplies	31,207.61	27,674.68		58,882.29
Total Supplies	\$31,207.61	\$27,674.68		\$58,882.29
Total 2640 Care and Upkeep of Equipment Services	\$31,207.61	\$27,674.68		\$500,664.76

LEA : 115218303 South Middleton SD

Printed 12/20/2021 4:36:40 PM

General Fund (10)

2650 Vehicle Operation and Maintenance Services (Other Than Student Transportation Vehicles)	<u>Elementary</u>	<u>Secondary</u>	<u>Federal</u>	<u>Total</u>
600 <u>Supplies</u>				
610 General Supplies	1,996.29	1,770.30		3,766.59
620 Energy				5,440.50
Total Supplies	\$1,996.29	\$1,770.30		\$9,207.09
700 <u>Property</u>				
762 Capitalized Equipment - Replacement				53,121.30
Total Property				\$53,121.30
Total 2650 Vehicle Operation and Maintenance Services (Other Than Student Transportation Vehicles)	\$1,996.29	\$1,770.30		\$62,328.39

LEA : 115218303 South Middleton SD

Printed 12/20/2021 4:36:40 PM

General Fund (10)				
2660 Safety and Security Services	<u>Elementary</u>	<u>Secondary</u>	<u>Federal</u>	<u>Total</u>
700 <u>Property</u>				
756 Capitalized Technology Equipment – Original				12,341.17
Total Property				\$12,341.17
Total 2660 Safety and Security Services				\$12,341.17

LEA : 115218303 South Middleton SD

Printed 12/20/2021 4:36:40 PM

General Fund (10)

2700 Student Transportation Services	<u>Elementary</u>	<u>Secondary</u>	<u>Federal</u>	<u>Total</u>
100 <u>Personnel Services – Salaries</u>				
100 Personnel Services – Salaries				89,918.07
Total Personnel Services – Salaries				\$89,918.07
200 <u>Personnel Services – Employee Benefits</u>				
210 Group Insurance – Contracted Provider				129.20
220 Social Security Contributions				6,878.57
230 PSERS Retirement Contributions				16,772.75
260 Workers' Compensation				1,718.00
Total Personnel Services – Employee Benefits				\$25,498.52
500 <u>Other Purchased Services</u>				
513 Contracted Carriers				1,572,500.30
516 Student Transportation Services From the IU				33,295.14
Total Other Purchased Services				\$1,605,795.44
600 <u>Supplies</u>				
610 General Supplies				673.26
650 Supplies & Fees – Technology Related				8,067.00
Total Supplies				\$8,740.26
Total 2700 Student Transportation Services				\$1,729,952.29

LEA : 115218303 South Middleton SD

Printed 12/20/2021 4:36:40 PM

General Fund (10)

2710 Supervision of Student Transportation Services	<u>Elementary</u>	<u>Secondary</u>	<u>Federal</u>	<u>Total</u>
100 <u>Personnel Services – Salaries</u>				
100 Personnel Services – Salaries				40,121.22
Total Personnel Services – Salaries				\$40,121.22
200 <u>Personnel Services – Employee Benefits</u>				
210 Group Insurance – Contracted Provider				129.20
220 Social Security Contributions				3,069.17
230 PSERS Retirement Contributions				12,638.02
260 Workers' Compensation				244.00
Total Personnel Services – Employee Benefits				\$16,080.39
500 <u>Other Purchased Services</u>				
513 Contracted Carriers				(28,710.95)
Total Other Purchased Services				(\$28,710.95)
Total 2710 Supervision of Student Transportation Services				\$27,490.66

LEA : 115218303 South Middleton SD

Printed 12/20/2021 4:36:40 PM

General Fund (10)

2711 Supervision of Student Transportation Services – Head of Component

Elementary Secondary Federal Total

100 <u>Personnel Services – Salaries</u>				
100 Personnel Services – Salaries				40,121.22
Total Personnel Services – Salaries				\$40,121.22
200 <u>Personnel Services – Employee Benefits</u>				
210 Group Insurance – Contracted Provider				129.20
220 Social Security Contributions				3,069.17
230 PSERS Retirement Contributions				12,638.02
260 Workers' Compensation				244.00
Total Personnel Services – Employee Benefits				\$16,080.39
500 <u>Other Purchased Services</u>				
513 Contracted Carriers				(28,710.95)
Total Other Purchased Services				(\$28,710.95)
Total 2711 Supervision of Student Transportation Services – Head of Component				\$27,490.66

LEA : 115218303 South Middleton SD

Printed 12/20/2021 4:36:40 PM

General Fund (10)				
2720 Vehicle Operation Services	<u>Elementary</u>	<u>Secondary</u>	<u>Federal</u>	<u>Total</u>
500 <u>Other Purchased Services</u>				
513 Contracted Carriers				1,538,237.50
Total Other Purchased Services				\$1,538,237.50
600 <u>Supplies</u>				
610 General Supplies				673.26
650 Supplies & Fees – Technology Related				8,067.00
Total Supplies				\$8,740.26
Total 2720 Vehicle Operation Services				\$1,546,977.76

LEA : 115218303 South Middleton SD

Printed 12/20/2021 4:36:40 PM

General Fund (10)

2730 Monitoring Services

Elementary Secondary Federal Total

100 <u>Personnel Services – Salaries</u>				
100 Personnel Services – Salaries				49,796.85
Total Personnel Services – Salaries				\$49,796.85
200 <u>Personnel Services – Employee Benefits</u>				
220 Social Security Contributions				3,809.40
230 PSERS Retirement Contributions				4,134.73
260 Workers’ Compensation				1,474.00
Total Personnel Services – Employee Benefits				\$9,418.13
500 <u>Other Purchased Services</u>				
516 Student Transportation Services From the IU				33,295.14
Total Other Purchased Services				\$33,295.14
Total 2730 Monitoring Services				\$92,510.12

LEA : 115218303 South Middleton SD

Printed 12/20/2021 4:36:40 PM

General Fund (10)

2750 Nonpublic Transportation	<u>Elementary</u>	<u>Secondary</u>	<u>Federal</u>	<u>Total</u>
500 <u>Other Purchased Services</u>				
513 Contracted Carriers				62,973.75
Total Other Purchased Services				\$62,973.75
Total 2750 Nonpublic Transportation				\$62,973.75

LEA : 115218303 South Middleton SD

Printed 12/20/2021 4:36:40 PM

General Fund (10)

2800 Support Services – Central	<u>Elementary</u>	<u>Secondary</u>	<u>Federal</u>	<u>Total</u>
200 <u>Personnel Services – Employee Benefits</u>				
240 Tuition Reimbursement				16,546.60
Total Personnel Services – Employee Benefits				\$16,546.60
300 <u>Purchased Professional and Technical Services</u>				
340 Technical Services				2,300.00
Total Purchased Professional and Technical Services				\$2,300.00
Total 2800 Support Services – Central				\$18,846.60

LEA : 115218303 South Middleton SD

Printed 12/20/2021 4:36:40 PM

General Fund (10)

2820 Information Services

300 Purchased Professional and Technical Services

	<u>Elementary</u>	<u>Secondary</u>	<u>Federal</u>	<u>Total</u>
340 Technical Services				2,300.00
Total Purchased Professional and Technical Services				\$2,300.00
Total 2820 Information Services				\$2,300.00

Page - 55 of 60

[illegible][illegible][illegible]

2,300.00

\$2,300.00

\$2,300.00

LEA : 115218303 South Middleton SD

Printed 12/20/2021 4:36:40 PM

General Fund (10)				
2830 Staff Services	<u>Elementary</u>	<u>Secondary</u>	<u>Federal</u>	<u>Total</u>
200 <u>Personnel Services – Employee Benefits</u>				
240 Tuition Reimbursement				16,546.60
Total Personnel Services – Employee Benefits				\$16,546.60
Total 2830 Staff Services				\$16,546.60

LEA : 115218303 South Middleton SD

Printed 12/20/2021 4:36:40 PM

General Fund (10)

2834 Staff Development Services – Non-Instructional, Certified Staff Only

Elementary

Secondary

Federal

Total

200 Personnel Services – Employee Benefits

240 Tuition Reimbursement

8,806.60

Total Personnel Services – Employee Benefits				\$8,806.60
--	--	--	--	------------

Total 2834 Staff Development Services – Non-Instructional, Certified Staff Only				\$8,806.60
---	--	--	--	------------

LEA : 115218303 South Middleton SD

Printed 12/20/2021 4:36:40 PM

General Fund (10)

2836 Staff Development Services – Non-Instructional, Non-Certified Staff Only	<u>Elementary</u>	<u>Secondary</u>	<u>Federal</u>	<u>Total</u>
200 <u>Personnel Services – Employee Benefits</u>				
240 Tuition Reimbursement				7,740.00
Total Personnel Services – Employee Benefits				\$7,740.00
Total 2836 Staff Development Services – Non-Instructional, Non-Certified Staff Only				\$7,740.00

LEA : 115218303 South Middleton SD

Printed 12/20/2021 4:36:40 PM

General Fund (10)

2900 Other Support Services	<u>Elementary</u>	<u>Secondary</u>	<u>Federal</u>	<u>Total</u>
500 <u>Other Purchased Services</u>				
595 IU Payments By Withholding				30,756.44
Total Other Purchased Services				\$30,756.44
Total 2900 Other Support Services				\$30,756.44

LEA : 115218303 South Middleton SD

Printed 12/20/2021 4:36:40 PM

General Fund (10)

2910 Support Services Not Listed Elsewhere In the 2000 Series

<u>Elementary</u>	<u>Secondary</u>	<u>Federal</u>	<u>Total</u>
-------------------	------------------	----------------	--------------

500 Other Purchased Services

595 IU Payments By Withholding			30,756.44
--------------------------------	--	--	-----------

Total Other Purchased Services			\$30,756.44
---------------------------------------	--	--	--------------------

Total 2910 Support Services Not Listed Elsewhere In the 2000 Series			\$30,756.44
--	--	--	--------------------

LEA : 115218303 South Middleton SD

Printed 12/20/2021 4:36:48 PM

General Fund (10)

3000 Operation of Non-Instructional Services		<u>Total</u>
100 <u>Personnel Services – Salaries</u>		
100 Personnel Services – Salaries	470,665.60	
Total Personnel Services – Salaries	\$470,665.60	
200 <u>Personnel Services – Employee Benefits</u>		
210 Group Insurance – Contracted Provider	15,692.48	
220 Social Security Contributions	33,256.80	
230 PSERS Retirement Contributions	99,168.10	
260 Workers' Compensation	1,242.59	
270 Group Insurance – Self-Insurance	698.71	
292 Health Savings Accounts	601.00	
Total Personnel Services – Employee Benefits	\$150,659.68	
300 <u>Purchased Professional and Technical Services</u>		
330 Other Professional Services	780.00	
390 Other Purchased Professional and Technical Services	2,229.00	
Total Purchased Professional and Technical Services	\$3,009.00	
400 <u>Purchased Property Services</u>		
430 Repairs and Maintenance Services	1,537.30	
Total Purchased Property Services	\$1,537.30	
500 <u>Other Purchased Services</u>		
510 Student Transportation Services	39,068.91	
580 Travel	676.40	
599 Other Miscellaneous Purchased Services	4,516.34	
Total Other Purchased Services	\$44,261.65	
600 <u>Supplies</u>		
610 General Supplies	54,559.75	
Total Supplies	\$54,559.75	
700 <u>Property</u>		
752 Capital Equipment – Original and Additional	17,319.75	
Total Property	\$17,319.75	
800 <u>Other Objects</u>		
810 Dues and Fees	2,349.00	
860 Grants To Municipal and Community Service Organizations	5,000.00	
890 Miscellaneous Expenditures	644.75	
Total Other Objects	\$7,993.75	
Total 3000 Operation of Non-Instructional Services	\$750,006.48	

LEA : 115218303 South Middleton SD

Printed 12/20/2021 4:36:48 PM

General Fund (10)				
3200 Student Activities				
	<u>Elementary</u>	<u>Secondary</u>	<u>Federal</u>	<u>Total</u>
100 <u>Personnel Services – Salaries</u>				
100 Personnel Services – Salaries				470,665.60
Total Personnel Services – Salaries				\$470,665.60
200 <u>Personnel Services – Employee Benefits</u>				
210 Group Insurance – Contracted Provider				15,692.48
220 Social Security Contributions				33,256.80
230 PSERS Retirement Contributions				99,168.10
260 Workers' Compensation				1,242.59
270 Group Insurance – Self-Insurance				698.71
292 Health Savings Accounts				601.00
Total Personnel Services – Employee Benefits				\$150,659.68
300 <u>Purchased Professional and Technical Services</u>				
330 Other Professional Services				780.00
390 Other Purchased Professional and Technical Services				2,229.00
Total Purchased Professional and Technical Services				\$3,009.00
400 <u>Purchased Property Services</u>				
430 Repairs and Maintenance Services				1,537.30
Total Purchased Property Services				\$1,537.30
500 <u>Other Purchased Services</u>				
510 Student Transportation Services				39,068.91
580 Travel				676.40
599 Other Miscellaneous Purchased Services				4,516.34
Total Other Purchased Services				\$44,261.65
600 <u>Supplies</u>				
610 General Supplies				54,559.75
Total Supplies				\$54,559.75
700 <u>Property</u>				
752 Capital Equipment – Original and Additional				17,319.75
Total Property				\$17,319.75
800 <u>Other Objects</u>				
810 Dues and Fees				2,349.00
890 Miscellaneous Expenditures				644.75
Total Other Objects				\$2,993.75
Total 3200 Student Activities				\$745,006.48

LEA : 115218303 South Middleton SD

Printed 12/20/2021 4:36:48 PM

General Fund (10)				
3300 Community Services	<u>Elementary</u>	<u>Secondary</u>	<u>Federal</u>	<u>Total</u>
800 <u>Other Objects</u>				
860 Grants To Municipal and Community Service Organizations				5,000.00
Total Other Objects				\$5,000.00
Total 3300 Community Services				\$5,000.00

LEA : 115218303 South Middleton SD

Printed 12/20/2021 4:36:59 PM

General Fund (10)	
5000 Other Expenditures and Financing Uses	<u>Total</u>
800 <u>Other Objects</u>	
830 Interest	842,361.95
Total Other Objects	\$842,361.95
900 <u>Other Uses of Funds</u>	
910 Redemption of Principal	2,460,000.00
939 Other Fund Transfers	250,000.00
Total Other Uses of Funds	\$2,710,000.00
Total 5000 Other Expenditures and Financing Uses	\$3,552,361.95

LEA : 115218303 South Middleton SD

Printed 12/20/2021 4:36:59 PM

General Fund (10)

5100 Debt Service / Other Expenditures and Financing Uses	<u>Elementary</u>	<u>Secondary</u>	<u>Federal</u>	<u>Total</u>
800 <u>Other Objects</u>				
830 Interest				842,361.95
Total Other Objects				\$842,361.95
900 <u>Other Uses of Funds</u>				
910 Redemption of Principal				2,460,000.00
Total Other Uses of Funds				\$2,460,000.00
Total 5100 Debt Service / Other Expenditures and Financing Uses				\$3,302,361.95

LEA : 115218303 South Middleton SD

Printed 12/20/2021 4:36:59 PM

General Fund (10)

5110 Debt Service	<u>Elementary</u>	<u>Secondary</u>	<u>Federal</u>	<u>Total</u>
800 <u>Other Objects</u>				
830 Interest				842,361.95
Total Other Objects				\$842,361.95
900 <u>Other Uses of Funds</u>				
910 Redemption of Principal				2,460,000.00
Total Other Uses of Funds				\$2,460,000.00
Total 5110 Debt Service				\$3,302,361.95

LEA : 115218303 South Middleton SD

Printed 12/20/2021 4:36:59 PM

General Fund (10)

5200 Interfund Transfers – Out	<u>Elementary</u>	<u>Secondary</u>	<u>Federal</u>	<u>Total</u>
900 <u>Other Uses of Funds</u>				
939 Other Fund Transfers				250,000.00
Total Other Uses of Funds				\$250,000.00
Total 5200 Interfund Transfers – Out				\$250,000.00

LEA : 115218303 South Middleton SD

Printed 12/20/2021 4:36:59 PM

General Fund (10)

5230 Capital Projects Fund Transfers	<u>Elementary</u>	<u>Secondary</u>	<u>Federal</u>	<u>Total</u>
900 <u>Other Uses of Funds</u>				
939 Other Fund Transfers				250,000.00
Total Other Uses of Funds				\$250,000.00
Total 5230 Capital Projects Fund Transfers				\$250,000.00

LEA : 115218303 South Middleton SD

Printed 12/20/2021 4:36:50 PM

Student Sponsored Activity Fund (21)

3200 Student Activities	<u>Elementary</u>	<u>Secondary</u>	<u>Federal</u>	<u>Total</u>
600 <u>Supplies</u>				
610 General Supplies				108,887.64
Total Supplies				\$108,887.64
Total 3200 Student Activities				\$108,887.64

LEA : 115218303 South Middleton SD

Printed 12/20/2021 4:36:43 PM

Other Capital Projects Fund (39)

2000 Support Services		<u>Total</u>
800 <u>Other Objects</u>		
810 Dues and Fees		167,429.85
Total Other Objects		\$167,429.85
Total 2000 Support Services		\$167,429.85

LEA : 115218303 South Middleton SD

Printed 12/20/2021 4:36:43 PM

Other Capital Projects Fund (39)

2300 Support Services – Administration

Elementary

Secondary

Federal

Total

800 Other Objects

810 Dues and Fees

167,429.85

Total Other Objects				\$167,429.85
Total 2300 Support Services – Administration				\$167,429.85

LEA : 115218303 South Middleton SD

Printed 12/20/2021 4:36:43 PM

Other Capital Projects Fund (39)

2390 Other Administration Services

<u>Elementary</u>	<u>Secondary</u>	<u>Federal</u>	<u>Total</u>
-------------------	------------------	----------------	--------------

800 Other Objects

810 Dues and Fees				167,429.85
-------------------	--	--	--	------------

Total Other Objects				\$167,429.85
----------------------------	--	--	--	---------------------

Total 2390 Other Administration Services				\$167,429.85
---	--	--	--	---------------------

LEA : 115218303 South Middleton SD

Printed 12/20/2021 4:36:54 PM

Other Capital Projects Fund (39)

4000 Facilities Acquisition, Construction and Improvement Services

Total

400	<u>Purchased Property Services</u>	
450	Construction Services	1,100,917.86
Total Purchased Property Services		\$1,100,917.86
700	<u>Property</u>	
720	Buildings	127,858.99
756	Capitalized Technology Equipment – Original	10,000.00
Total Property		\$137,858.99
Total 4000 Facilities Acquisition, Construction and Improvement Services		\$1,238,776.85

LEA : 115218303 South Middleton SD

Printed 12/20/2021 4:36:54 PM

Other Capital Projects Fund (39)

4500 Building Acquisition and Construction Services – Original and Additional	<u>Elementary</u>	<u>Secondary</u>	<u>Federal</u>	<u>Total</u>
700 <u>Property</u>				
720 Buildings				127,858.99
Total Property				\$127,858.99
Total 4500 Building Acquisition and Construction Services – Original and Additional				\$127,858.99

LEA : 115218303 South Middleton SD

Printed 12/20/2021 4:36:54 PM

Other Capital Projects Fund (39)

4600 Existing Building Improvement Services

Elementary

Secondary

Federal

Total

400 Purchased Property Services

450 Construction Services

1,100,917.86

Total Purchased Property Services

\$1,100,917.86

700 Property

756 Capitalized Technology Equipment – Original

10,000.00

Total Property

\$10,000.00

Total 4600 Existing Building Improvement Services

\$1,110,917.86

LEA : 115218303 South Middleton SD

Printed 12/20/2021 4:37:00 PM

Other Capital Projects Fund (39)

5000 Other Expenditures and Financing Uses

Total

800	<u>Other Objects</u>	
830	Interest	160,287.50
Total Other Objects		\$160,287.50
900	<u>Other Uses of Funds</u>	
910	Redemption of Principal	8,930,000.00
Total Other Uses of Funds		\$8,930,000.00
Total 5000 Other Expenditures and Financing Uses		\$9,090,287.50

LEA : 115218303 South Middleton SD

Printed 12/20/2021 4:37:00 PM

Other Capital Projects Fund (39)

5100 Debt Service / Other Expenditures and Financing Uses	<u>Elementary</u>	<u>Secondary</u>	<u>Federal</u>	<u>Total</u>
800 <u>Other Objects</u>				
830 Interest				160,287.50
Total Other Objects				\$160,287.50
900 <u>Other Uses of Funds</u>				
910 Redemption of Principal				8,930,000.00
Total Other Uses of Funds				\$8,930,000.00
Total 5100 Debt Service / Other Expenditures and Financing Uses				\$9,090,287.50

LEA : 115218303 South Middleton SD

Printed 12/20/2021 4:37:00 PM

Other Capital Projects Fund (39)

5110 Debt Service	<u>Elementary</u>	<u>Secondary</u>	<u>Federal</u>	<u>Total</u>
800 <u>Other Objects</u>				
830 Interest				160,287.50
Total Other Objects				\$160,287.50
Total 5110 Debt Service				\$160,287.50

LEA : 115218303 South Middleton SD

Printed 12/20/2021 4:37:00 PM

Other Capital Projects Fund (39)

5120 Debt Service – Refunded Bonds

Elementary

Secondary

Federal

Total

900 Other Uses of Funds

910 Redemption of Principal

8,930,000.00

Total Other Uses of Funds				\$8,930,000.00
Total 5120 Debt Service – Refunded Bonds				\$8,930,000.00

LEA : 115218303 South Middleton SD

Printed 12/20/2021 4:37:18 PM

	<u>General Fund(10)</u>	<u>Student Sponsored Activity Fund(21)</u>	<u>Public Purpose Trust(27)</u>	<u>Other Compt Approved (28)</u>	<u>Athletic / Activity(29)</u>
1000 <u>Instruction</u>					
1100 Regular Programs - Elementary / Secondary	17,980,368.11				
1200 Special Programs - Elementary / Secondary	5,817,394.24				
1300 Vocational Education	434,620.00				
1400 Other Instructional Programs - Elementary / Secondary	8,418.60				
1500 Nonpublic School Programs	15,821.30				
1600 Adult Education Programs	81,684.00				
Total Instruction	\$24,338,306.25				
2000 <u>Support Services</u>					
2100 Support Services - Students	1,392,658.51				
2200 Support Services - Instructional Staff	2,199,289.07				
2300 Support Services - Administration	2,659,110.21				
2400 Support Services - Pupil Health	633,292.79				
2500 Support Services - Business	679,459.71				
2600 Operation and Maintenance of Plant Services	2,865,798.98				
2700 Student Transportation Services	1,729,952.29				
2800 Support Services - Central	18,846.60				
2900 Other Support Services	30,756.44				
Total Support Services	\$12,209,164.60				
3000 <u>Operation of Non-Instructional Services</u>					
3200 Student Activities	745,006.48	108,887.64			
3300 Community Services	5,000.00				
Total Operation of Non-Instructional Services	\$750,006.48	\$108,887.64			
4000 <u>Facilities Acquisition, Construction and Improvement Services</u>					
4500 Building Acquisition and Construction Services - Original and Additional					
4600 Existing Building Improvement Services					
Total Facilities Acquisition, Construction and Improvement Services					
5000 <u>Other Expenditures and Financing Uses</u>					
5100 Debt Service / Other Expenditures and Financing Uses	3,302,361.95				
5200 Interfund Transfers - Out	250,000.00				
Total Other Expenditures and Financing Uses	\$3,552,361.95				
TOTAL ACTUAL EXPENDITURES & OTHER FINANCING USES	\$40,849,839.28	\$108,887.64			

LEA : 115218303 South Middleton SD

Printed 12/20/2021 4:37:18 PM

	<u>Capital Reserve (690.1850)(31)</u>	<u>Capital Reserve (1431)(32)</u>	<u>Other Capital Projects Fund(39)</u>	<u>Debt Service(40)</u>	<u>Permanent(90)</u>
1000 <u>Instruction</u>					
1100 Regular Programs - Elementary / Secondary					
1200 Special Programs - Elementary / Secondary					
1300 Vocational Education					
1400 Other Instructional Programs - Elementary / Secondary					
1500 Nonpublic School Programs					
1600 Adult Education Programs					
Total Instruction					
2000 <u>Support Services</u>					
2100 Support Services - Students					
2200 Support Services - Instructional Staff					
2300 Support Services - Administration			167,429.85		
2400 Support Services - Pupil Health					
2500 Support Services - Business					
2600 Operation and Maintenance of Plant Services					
2700 Student Transportation Services					
2800 Support Services - Central					
2900 Other Support Services					
Total Support Services			\$167,429.85		
3000 <u>Operation of Non-Instructional Services</u>					
3200 Student Activities					
3300 Community Services					
Total Operation of Non-Instructional Services					
4000 <u>Facilities Acquisition, Construction and Improvement Services</u>					
4500 Building Acquisition and Construction Services - Original and Additional			127,858.99		
4600 Existing Building Improvement Services			1,110,917.86		
Total Facilities Acquisition, Construction and Improvement Services			\$1,238,776.85		
5000 <u>Other Expenditures and Financing Uses</u>					
5100 Debt Service / Other Expenditures and Financing Uses			9,090,287.50		
5200 Interfund Transfers - Out					
Total Other Expenditures and Financing Uses			\$9,090,287.50		
TOTAL ACTUAL EXPENDITURES & OTHER FINANCING USES			\$10,496,494.20		

LEA : 115218303 South Middleton SD

Printed 12/20/2021 4:37:18 PM

	<u>Total</u>
1000 <u>Instruction</u>	
1100 Regular Programs - Elementary / Secondary	17,980,368.11
1200 Special Programs - Elementary / Secondary	5,817,394.24
1300 Vocational Education	434,620.00
1400 Other Instructional Programs - Elementary / Secondary	8,418.60
1500 Nonpublic School Programs	15,821.30
1600 Adult Education Programs	81,684.00
Total Instruction	\$24,338,306.25
2000 <u>Support Services</u>	
2100 Support Services - Students	1,392,658.51
2200 Support Services - Instructional Staff	2,199,289.07
2300 Support Services - Administration	2,826,540.06
2400 Support Services - Pupil Health	633,292.79
2500 Support Services - Business	679,459.71
2600 Operation and Maintenance of Plant Services	2,865,798.98
2700 Student Transportation Services	1,729,952.29
2800 Support Services - Central	18,846.60
2900 Other Support Services	30,756.44
Total Support Services	\$12,376,594.45
3000 <u>Operation of Non-Instructional Services</u>	
3200 Student Activities	853,894.12
3300 Community Services	5,000.00
Total Operation of Non-Instructional Services	\$858,894.12
4000 <u>Facilities Acquisition, Construction and Improvement Services</u>	
4500 Building Acquisition and Construction Services - Original and Additional	127,858.99
4600 Existing Building Improvement Services	1,110,917.86
Total Facilities Acquisition, Construction and Improvement Services	\$1,238,776.85
5000 <u>Other Expenditures and Financing Uses</u>	
5100 Debt Service / Other Expenditures and Financing Uses	12,392,649.45
5200 Interfund Transfers - Out	250,000.00
Total Other Expenditures and Financing Uses	\$12,642,649.45
TOTAL ACTUAL EXPENDITURES & OTHER FINANCING USES	\$51,455,221.12

LEA : 115218303 South Middleton SD

Printed 12/20/2021 4:37:29 PM

PSERS Salary Data (Salary Data should relate to the General Fund only)

Amount	Description	Amount
	Total Salary Base for salaries subject to PSERS withholding	14,185,111.10
	Total Federally Funded salaries subject to PSERS withholding	213,315.24

Title I Expenditure Data

Amount	Description	Amount
	Expenditures Funded with Current Title I Funds	208,657.00
	Expenditures Funded with Carry over Title I Funds	
Total Title I Expenditure Data		\$208,657.00

Title IV Revenue Data

Amount	Description	Amount
	Revenue from Title IV-A-1: Student Support and Academic Enrichment Grants	15,975.00
	Revenue from Title IV-B: 21st Century Community Learning Centers	

Title V Revenue Data

Amount	Description	Amount
	Revenue from Title V-B-2: Rural and Low-Income School Programs	
	Revenue from Title V-B-1: Small Rural School Achievement (Directly from the Federal Govt)	

1 .	<u>Current Special Education Expenditures/Expenses within Functions 1000, 2000, 3100, and 3200</u>	5,060,355.64
2 .	<u>Current Special Education Expenditures for Instruction Functions 1000 and 3200</u>	3,238,289.77
3 .	<u>Current Special Education Expenditures for Pupil Support Services Function 2100</u>	209,766.62
4 .	<u>Current Special Education Expenditures for Instructional Staff Support Services Function 2200</u>	319,251.87
5 .	<u>Current Special Education Expenditures for Student Transportation Support Services Function 2700</u>	256,364.90

Note: Do not report total Special Education expenditures for the functions listed above. Refer to the AFR User Manual for specific instructions on Funds/Functions/Objects to be included and excluded on each line.

Benefits for Staff Relative to Collective Bargaining Agreements

	OBJECT	COVERED	NOT COVERED	TOTAL
10 General Fund				
	211 Medical Insurance	2,803,217.27	891,299.60	3,694,516.87
	212 Dental Insurance			
	215 Eye Care Insurance	1,441.17	458.23	1,899.40
	216 Prescription Insurance			
	271 Self-Insurance Medical Benefits			
	272 Self-Insurance Dental Benefits	106,584.43	33,889.15	140,473.58
	275 Self-Insurance Eye Care Benefits			
	276 Self-Insurance Prescription Benefits			
	FUND TOTAL	\$2,911,242.87	\$925,646.98	\$3,836,889.85
50 Enterprise Fund	No Self Insurance data to report			
	211 Medical Insurance			
	212 Dental Insurance			
	215 Eye Care Insurance			
	216 Prescription Insurance			
	271 Self-Insurance Medical Benefits			
	272 Self-Insurance Dental Benefits			
	275 Self-Insurance Eye Care Benefits			
	276 Self-Insurance Prescription Benefits			
	FUND TOTAL			
60 Internal Service Fund	No Self Insurance data to report			
	211 Medical Insurance			
	212 Dental Insurance			
	215 Eye Care Insurance			
	216 Prescription Insurance			
	271 Self-Insurance Medical Benefits			
	272 Self-Insurance Dental Benefits			
	275 Self-Insurance Eye Care Benefits			
	276 Self-Insurance Prescription Benefits			
	FUND TOTAL			
Total of All Funds		\$2,911,242.87	\$925,646.98	\$3,836,889.85

LEA : 115218303 South Middleton SD

Printed 12/20/2021 4:37:37 PM

Function	Special Education (Prior Year)	Nonspecial Education (Prior Year)	Total (Prior Year)	Special Education (Current Year)	Nonspecial Education (Current Year)	Total (Current Year)
2120 Guidance Services	140,026.00	793,482.00	933,508.00	126,213.92	715,213.41	841,427.33
2140 Psychological Services	140,501.80	129,513.00	270,014.80	101,781.39	93,820.95	195,602.34
2150 Speech Pathology and Audiology Services						
2160 Social Work Services	659.00	3,736.00	4,395.00	659.00	3,736.00	4,395.00
2260 Instruction and Curriculum Development Services	71,256.54	403,788.00	475,044.54	73,476.02	416,365.07	489,841.09
2350 Legal and Accounting Services	14,456.00	81,918.00	96,374.00	23,880.55	135,324.21	159,204.76
2420 Medical Services	19,410.00	109,991.00	129,401.00	21,282.34	120,601.00	141,883.34
2440 Nursing Services	58,672.00	332,475.00	391,147.00	73,711.35	417,698.10	491,409.45
2700 Student Transportation Services	251,893.00	1,427,396.00	1,679,289.00	259,492.48	1,470,459.81	1,729,952.29
Total	\$696,874.34	\$3,282,299.00	\$3,979,173.34	\$680,497.05	\$3,373,218.55	\$4,053,715.60

LEA : 115218303 South Middleton SD

Printed 12/20/2021 4:37:43 PM

(PRINCIPAL AMOUNTS ONLY)

GOVERNMENTAL FUNDS/ ACTIVITIES

	Short-Term Borrowing	General Obligation Bonds/Notes	Authority Building Obligations	Other Long-Term Debt	Other Post- Employment Benefits (OPEB)	Compensated Absences	Net Pension Liability	Total
1. Debt at Beginning of Fiscal Year		33,850,000.00		778,233.00	4,085,550.00	703,368.00	45,473,000.00	84,890,151.00
2. Additional Debt Incurred During Year		9,265,000.00		734,110.00	505,360.00	75,316.00	1,107,000.00	11,686,786.00
3. Retirements and Repayments		11,390,000.00		429,877.00				11,819,877.00
4. Debt at End of Fiscal Year		31,725,000.00		1,082,466.00	4,590,910.00	778,684.00	46,580,000.00	84,757,060.00
5. Accreted Interest at End Of Fiscal Year								
6. Total Debt and Accreted Interest		31,725,000.00		1,082,466.00	4,590,910.00	778,684.00	46,580,000.00	84,757,060.00
7. Current Portion P&I - Due within 1 year		2,701,706.65		102,579.00		75,000.00		2,879,285.65
8. Interest Paid during current fiscal year		1,002,649.20						1,002,649.20

(PRINCIPAL AMOUNTS ONLY)

PROPRIETARY FUNDS

- 1. Debt at Beginning of Fiscal Year
- 2. Additional Debt Incurred During Year
- 3. Retirements and Repayments
- 4. Debt at End of Fiscal Year
- 5. Accreted Interest at End Of Fiscal Year
- 6. Total Debt and Accreted Interest
- 7. Current Portion P&I - Due within 1 year
- 8. Interest Paid during current fiscal year

LEA : 115218303 South Middleton SD

Printed 12/20/2021 4:37:43 PM

Total Principal and Interest Payments Made by Your School - All Funds

Function	Fund		Principal (910)	Principal (920)	Interest (830)	Total (Principal +Interest)	Misc Other Uses (990)
5110	10	General Fund	2,460,000.00		842,361.95	3,302,361.95	
5110	20	Special Revenue Funds					
5110	30	Capital Projects Funds			160,287.50	160,287.50	
5110	40	Debt Service Fund					
5110	90	Permanent Fund					
5120	10	General Fund					
5120	20	Special Revenue Funds					
5120	30	Capital Projects Funds	8,930,000.00			8,930,000.00	
5120	40	Debt Service Fund					
Total Debt Payments - Governmental Funds			\$11,390,000.00		\$1,002,649.45	\$12,392,649.45	
Function	Fund		Principal (910)	Principal (920)	Interest (830)	Total (Principal +Interest)	
5110	50	Enterprise Fund					
5110	60	Internal Service Fund					
5120	50	Enterprise Fund					
5120	60	Internal Service Fund					
Total Debt Payments - Proprietary Funds							

LEA : 115218303 South Middleton SD

Printed 12/20/2021 4:37:43 PM

Debt Details
Governmental Funds/ Activities

Debt Category	Debt Issue Date (MM/YYYY)	Principal Amounts Only				Current Portion Due Within One Year (Principal and Interest)	Interest Paid During Fiscal Year
		Debt at Beginning of Fiscal Year	Additions	Reductions / Repayments	Debt at End of Fiscal Year		
General Obligation Bonds/Notes – CIB	05/2021		9,265,000.00		9,265,000.00	204,367.89	
General Obligation Bonds/Notes – CIB	06/2020	9,705,000.00			9,705,000.00	241,215.00	161,430.69
General Obligation Bonds/Notes – CIB	06/2019	9,745,000.00		35,000.00	9,710,000.00	301,123.76	266,823.76
General Obligation Bonds/Notes – CIB	05/2016	8,935,000.00		8,935,000.00			480,893.50
General Obligation Bonds/Notes – CIB	05/2016	4,375,000.00		2,420,000.00	1,955,000.00	1,955,000.00	70,101.25
General Obligation Bonds/Notes – CIB	03/2015	450,000.00			450,000.00		9,000.00
General Obligation Bonds/Notes – CIB	03/2014	640,000.00			640,000.00		14,400.00
Other Long Term Debt/Liabilities		778,233.00	734,110.00	429,877.00	1,082,466.00	102,579.00	
Compensated Absences		703,368.00	75,316.00		778,684.00	75,000.00	
Other Post-Employment Benefits (OPEB)		4,085,550.00	505,360.00		4,590,910.00		
Net Pension Liability		45,473,000.00	1,107,000.00		46,580,000.00		
Totals for Debt Entered:		\$84,890,151.00	\$11,686,786.00	\$11,819,877.00	\$84,757,060.00	\$2,879,285.65	\$1,002,649.20

LEA : 115218303 South Middleton SD

Printed 12/20/2021 4:37:47 PM

General Fund (10)

Section 1: Tuition/Purchased Services as Reported within Expenditure Detail	Amount
Tuition Reported in General Fund Expenditures 1000-560	4,549,128.67
Purchased Services in General Fund Expenditures 1000-594 and 1000-597	
Section 1 Total	\$4,549,128.67

Section 2: Tuition Paid to Institution Types During Fiscal Year	Tuition Paid For Nonspecial Education	Tuition Paid For Special Education	Total
1 1306 Institutions			
2 Institutionalized Children's Programs			
3 Juveniles Incarcerated in Adult Facilities			
4 Residential Treatment Facilities			
5 Other Local Education Agencies	289.34	899,608.10	899,897.44
6 Brick and Mortar Charter Schools			
7 Cyber Charter Schools	1,284,761.57	570,171.94	1,854,933.51
8 Career and Technology Centers	230,348.60	204,271.40	434,620.00
9 Approved Private Schools			
10 PA Chartered Schools for the Deaf and Blind			
11 Private Residential Rehabilitative Institutions	11,377.35		11,377.35
12 Juvenile Detention Centers			
13 Special Program Jointures			
14 Other Tuition Not Included Elsewhere In This Section	1,082,328.71	265,971.66	1,348,300.37
Section 2 Total	\$2,609,105.57	\$1,940,023.10	\$4,549,128.67

LEA : 115218303 South Middleton SD

Printed 12/20/2021 4:37:50 PM

Food Service / Cafeteria Operations Fund (51)

3000 Operation of Non-Instructional Services

Total

500 Other Purchased Services

570 Food Service Management	795,450.24
-----------------------------	------------

Total Other Purchased Services	\$795,450.24
---------------------------------------	---------------------

600 Supplies

610 General Supplies	58,275.05
----------------------	-----------

Total Supplies	\$58,275.05
-----------------------	--------------------

700 Property

740 Depreciation	638.84
------------------	--------

Total Property	\$638.84
-----------------------	-----------------

Total 3000 Operation of Non-Instructional Services	\$854,364.13
---	---------------------

LEA : 115218303 South Middleton SD

Printed 12/20/2021 4:37:50 PM

Food Service / Cafeteria Operations Fund (51)

3100 Food Services	<u>Elementary</u>	<u>Secondary</u>	<u>Federal</u>	<u>Total</u>
500 <u>Other Purchased Services</u>				
570 Food Service Management				795,450.24
Total Other Purchased Services				\$795,450.24
600 <u>Supplies</u>				
610 General Supplies				58,275.05
Total Supplies				\$58,275.05
700 <u>Property</u>				
740 Depreciation				638.84
Total Property				\$638.84
Total 3100 Food Services				\$854,364.13

	<u>Food Service(51)</u>	<u>Child Care Operations(52)</u>	<u>Other Enterprise(58)</u>	<u>Internal Service(60)</u>	<u>Total</u>
3000 <u>Operation of Non-Instructional Services</u>					
3100 Food Services	854,364.13				854,364.13
Total Operation of Non-Instructional Services	\$854,364.13				\$854,364.13
TOTAL ACTUAL EXPENDITURES & OTHER FINANCING USES	\$854,364.13				\$854,364.13

LEA : 115218303 South Middleton SD

Printed 12/20/2021 4:38:06 PM

Fund	School	School Number	Local Personnel	Local Nonpersonnel	State Personnel	State Nonpersonnel	Federal Personnel	Federal Nonpersonnel	Total	Explanation
10										
	Boiling Springs HS	6328	8,732,076.22	3,773,569.90			13,530.45	105,604.48	12,624,781.05	
	Iron Forge El Sch	8402	4,621,331.04	2,322,723.75			345,192.99	60,261.84	7,349,509.62	
	W.G. Rice El Sch	1730	4,844,870.97	3,039,830.71			175,914.37	264,851.84	8,325,467.89	
	Yellow Breeches MS	7611	6,330,911.08	2,446,824.32			103,810.92	81,389.58	8,962,935.90	
Total			24,529,189.31	11,582,948.68			638,448.73	512,107.74	37,262,694.46	